

**THE CASSIDINAE AND CRYPTOCEPHALINI  
(COLEOPTERA CHRYSOMELIDAE) OF SICILY:  
RECENT RECORDS AND UPDATED CHECKLIST**

COSIMO BAVIERA <sup>a\*</sup> AND DAVIDE SASSI <sup>b</sup>

**ABSTRACT.** This paper compiles an updated checklist of the Sicilian Cassidinae and Cryptocephalini species (Coleoptera: Chrysomelidae, Cassidinae and Cryptocephalinae) starting from a critical bibliographic screening and adding new material, mainly collected by the first author in the last few decades. A total of 61 species is reported, with new data for many rarely collected taxa. The provided data expand the known distribution of many uncommon species in Sicily. Two species are recorded for the first time: *Cassida inopinata* Sassi and Borowiec, 2006 and *Cryptocephalus (Cryptocephalus) bimaculatus* Fabricius, 1781 and two uncertain presences are confirmed: *Cassida deflorata* Suffrian, 1844 and *Cassida nobilis* Linné, 1758. The presence of other sixteen species is considered questionable and needs further confirmation.

## 1. Introduction

Leaf beetles are all phytophagous Coleoptera. They are usually of a rather stout build, with a rounded or oval shape, often brightly coloured or with metallic hues. Worldwide some 32500 species in 2114 genera of Chrysomelidae have been described (Ślipiński *et al.* 2011), the majority of which occur in the tropics as is the case with numerous other Coleoptera families. Currently, the leaf beetle subfamily Cassidinae comprises the tortoise beetles (Cassidinae s. str.) and the hispine beetles (Hispinae s. str.) (Borowiec 1995; Hsiao and Windsor 1999; Chaboo 2007). So far, the Cassidinae list about 6300 described species within more than 340 genera, being the second most speciose subfamily of leaf beetles (Borowiec and Świątojańska 2014). Borowiec and Świątojańska (2014) listed 12 tribes of Cassidinae (four in the Old World) and 25 tribes of Hispinae. Cassidini, the most species-rich tribe of the subfamily, include up to 1000 species within 87 genera; 41 of them are found in the Old World, 45 are listed from the New World. The huge genus *Cassida* Linnaeus (more than 430 described species) is distributed worldwide (Borowiec and Świątojańska 2017). Chaboo (2007), taking into account morphological characters proposed that the subfamilies Cassidinae sensu stricto (s. str.) and Hispinae s. str. constituted a monophyletic group and incorporated these two clades in a single subfamily, the Cassidinae sensu lato. Phylogenetic study based on molecular data (Gómez-Zurita *et al.* 2008), corroborated

this opinion. Cassidinae species tend to be monophagous (Chaboo 2007) and are often associated with the plant families Convolvulaceae and Asteraceae, but are also found feeding on Arecaceae, Boraginaceae, Caryophyllaceae, Chenopodioideae, Lamiaceae and Solanaceae (Borowiec and Świętojańska 2014). The complete life cycle of Cassidinae species often occur on a single plant, sometime on a single leaf (Borowiec and Świętojańska 2014). Cryptocephalini Gyllenhal, 1813 constitute the biggest tribe in the leaf beetle subfamily Cryptocephalinae, consisting of about 3,000 species worldwide. Within this tribe the most speciose genus, *Cryptocephalus*, lists about 1800 described species and subspecies (Schöller 2002). Another species-rich genus inside the Cryptocephalini tribe is *Pachybrachis* Chevrolat, 1836, made up of more than 350 described species, with 156 species and subspecies in the Palaearctic (Sassi 2012; Schöller 2020). *Pachybrachis* is widely distributed in the Holarctic and Neotropical regions and reaches its maximum species diversity in Central and South America (Montagna *et al.* 2013). The Cryptocephalinae are markedly less known than the Cassidinae, as in many cases they have not been the subject of recent revisions. In particular for the tropical regions, the understanding of this diverse subfamily stopped at studies carried out in the second half of the nineteenth century, since then only a few scattered contributes have been published. Several Sicilian Cassidinae and Cryptocephalini, together with others Chrysomelidae have been known for a long time for the Island and were listed in the Catalogues of Bertolini (1872, 1899, 1904), Luigioni (1929), and Vitale (1932, 1935). The Fauna Europaea database lists 49 species of Chrysomelidae Cryptocephalini and Cassidinae from Sicily (Sassi 2013). Much of the distribution data of the Italian Cryptocephalini from Sicily, some 294 records, were gathered in the Checklist and distribution of the Italian Fauna (Ckmap) project (Sassi 2005). The aim of the present paper is to provide an updated account of the presence and distribution of the Chrysomelidae Cassidinae and Cryptocephalini in Sicily as it were recently conducted for Curculioninae (Baviera and Caldara 2020), Histeridae (Baviera and Vienna 2019), Elateridae (Baviera and Platia 2018), Cerambycidae (Baviera *et al.* 2017), Chrysomelidae Alticini (Baviera and Biondi 2015) and Nitidulidae and Kateretidae (Baviera and Audisio 2014).

## 2. Materials and methods

Data came from samplings carried out all over Sicily, concentrated on the best-preserved habitats in mountains chains (Sicani, Madonie, Nebrodi, Peloritani, Erei, Iblei and Mount Etna) and on Sicilian Islands (Aeolian Archipelago: Lipari, Vulcano, Salina, Stromboli, Alicudi, Filicudi and Panarea; Egadi Archipelago: Favignana, Levanzo and Marettimo; Pelagie Archipelago: Lampedusa, Linosa and Lampione; Ustica; Pantelleria). Many listed specimens were obtained during research carried out aiming for a better knowledge of the Sicilian Coleoptera (Baviera 2007, 2008, 2010; Baviera and Liberti 2010; Baviera and Magnano 2010; Caldara *et al.* 2010; Bellò and Baviera 2011; Magrini and Baviera 2011; Toševski *et al.* 2011; Caldara *et al.* 2012; Toševski *et al.* 2014; Baviera 2015; Toševski *et al.* 2015; Baviera and Bellò 2016; Solano *et al.* 2016; Bellò *et al.* 2017, 2019). We used sweep netting, leaf-litter sifting and pitfall traps to collect samples. The data obtained were compared and combined with the regional presence available in published records. The systematics and nomenclature follow the recent Catalogue of Palearctic Coleoptera (Löbl and Smetana 2010). Genera and species are listed in alphabetical order within each

group. For each species the following data is given: nomenclatural combinations, chorotype (according to the categories proposed by Vigna Taglianti *et al.* (1992, 1999), Sassi (2005), and Biondi *et al.* (2013). The new records are listed as follows: locality (with municipality and province), date, collector, collecting method and habitat, number of specimens, and collection (in parentheses). As for the records taken from the literature, the source is given after the mentioned locality; updated data records from older collections are enclosed in square brackets. Data on host plants were obtained through careful bibliographic screening, integrated with unpublished personal observations. As for the names of botanic families, we used the last Checklist of Sicilian flora (Raimondo *et al.* 2010). As far as the trophic range is concerned, we refer to the terminology used by Biondi (1996): “monophagous” (MON): species with adults feeding on one or two systematically closely related plant genera; “oligophagous” (OLD): species with adults feeding on plant genera from one or two systematically closely related families; and “polyphagous” (POL): species with adults feeding on many botanical species that are not systematically closely related. New records are reported, grouped by Sicilian provinces, with data written on labels pinned under the specimens and standardized as follows: locality (with municipality and province), date, collecting method and habitat, surname and initials of name of the collector, collection acronym. The source of records taken from the literature is given as locality or generic regional record. The acronym “FEI” (Forum Entomologi Italiani) reports citations from photos identified on the web site <http://www.entomologiitaliani.net>.

#### CHOROTYPE ACRONYMS

ASE = Asiatic-European  
EME = Est-Mediterranean  
EUR = European  
NAF = North African  
MED = Mediterranean  
PAL = Palaearctic  
SEU = South-European  
SIE = Sibiric-European  
TEM = Turanic-European-Mediterranean  
TUE = Turanic-European  
WME = West-Mediterranean  
WPA = West-Palaeartic

#### ENDEMIC DISTRIBUTION TYPE ACRONYMS

SICI = Sicilian Endemic  
APP = Appenninic  
TYR = Tyrrenic

## PLANT FAMILY ACRONYMS

AMA = Amaranthaceae  
ANA = Anacardiaceae  
API = Apiaceae  
AST = Asteraceae  
BET = Betulaceae  
CAR = Caryophyllaceae  
CHE = Chenopodiaceae  
CIS = Cistaceae  
CON = Convolvulaceae  
COR = Corylaceae  
ERI = Ericaceae  
FAB = Fabaceae  
FAG = Fagaceae  
HYP = Hypericaceae  
MYR = Myrtaceae  
PLU = Plumbaginaceae  
POA = Poaceae  
RAN = Ranunculaceae  
ROS = Rosaceae  
SAL = Salicaceae  
TAM = Tamaricaceae  
ULM = Ulmaceae  
URT = Urticaceae  
UNK = Unknown

## COLLECTIONS ACRONYMS

BCPC = Baviera Cosimo Personal Collection  
SDPC = Sassi Davide Personal Collection  
MVPC = Monzini Vittorio Personal Collection  
CPPC = Cornacchia Paolo Personal Collection  
AFMC = Angelini Fernando Museum La Specola Collection  
DLPC = Diotti Luigi Personal Collection

### 3. Results

#### *Faunistic list*

CASSIDINAE GYLLENHAL, 1813

**CASSIDINI GYLLENHAL, 1813**

***Oxylepis* DESBROCHERS, 1884**

*Oxylepis deflexicollis* (Boheman, 1862)

Chorotype – EME

Host plant – CHE (*Caroxylon vermiculatum*, *Suaeda vermiculata*, *S. vera*; *Halocnemum strobilaceum*, *Salicornia* spp.)

Trophic category – POL

**Notes.** In Sicily this species was recorded with the nominal subspecies and *O. deflexicollis involuta* (Fairmaire, 1880) (Vitale 1935).

***Hypocassida* Weise, 1893**

*Hypocassida subferruginea* (Schrank, 1776)

Chorotype – PAL

Host plants – CON (*Convolvulus arvensis*, *C. sepium*, *C. cantabrica*, *C. soldanella*)

Trophic category – POL

New records – **Catania:** Mazzarone, 170m a.s.l., 10.III.2014, Baviera C. and Bellò C. (BCPC); **Caltanissetta:** Niscemi, incrocio per Sughereta, 300m a.s.l., 10.XII.2014, Baviera C. and Bellò C. (BCPC); **Ragusa:** Monti Iblei, Castelluccio, 1994, Sassi D. (SDPC); **Palermo:** Monti Sicani, Chiusa Sciafani, 720m a.s.l., 11.III.2009, Baviera C. (BCPC); Cinisi, Montagnalonga, Piano Margi, 30. XI.2015, Baviera C. and Bellò C. (BCPC); Balestrate, 160m a.s.l., 30.I.2011, Baviera C. and Bellò C. (BCPC); **Trapani:** Sicani, Santa Ninfa, 08.III.2014, Baviera C. and Bellò C. (BCPC).

**Notes.** In Sicily the species was recorded, until now, only from Agrigento (Licata: Fiori 1906) and Iblei (Castelluccio di Noto: Sassi 1994).

***Cassida* Linné, 1758**

*Cassida algerica* Aubé, 1842

Chorotype – SEU

Host plants – AST (*Galactites tomentosus*, *Cirsium scabrum*, *Cynara cardunculus*, *Carthamus* spp.)

Trophic category – POL

New records – **Messina:** Città, Annunziata, 03.V.2000, Baviera C. (BCPC); Torre Faro contr.

Granatari, 10.III.2000, Baviera C. (BCPC); ditto, 25-28.IV.2000; ditto, 12.V.2001; Monti Peloritani, Monte Antennammare, 1133m a.s.l., 05.VII.1999, Baviera C. (BCPC); ditto, 22.III.2004, Baviera C. (BCPC); Francavilla di Sicilia, Fiume Alcantara, Le Gurne, 19.V.2010, Baviera C. (BCPC). **Catania**: Castiglione di Sicilia, Fiume Alcantara, Cuba di Santa Domenica, 19.V.2010, Baviera C. (BCPC); Raddusa, Libertina, 28.V.2007, Diotti L. (DLPC); Raddusa, Lago Ogliastro, 29.V.2007, Diotti L. (DLPC); Monte Etna, Linguaglossa Catena, 500m a.s.l., 26.IV.2000, Angelini F. (CAMC); **Siracusa**: Lentini, Lago di Lentini, 28.V.2007, Diotti L. (DLPC); **Palermo**: Fiume Pollina, 28.V.1972, Romano M. (BCPC); Sicani, Bosco Ficuzza, 700m a.s.l., 01.V.2000, Angelini F. (CAMC); ditto, IV.1934, (SDPC); Lago Piana degli Albanesi, 610m a.s.l., 21.V.1996, (SDPC); Monte Genuardo, 28.V.2007, Baviera C. (BCPC).

**Notes.** A common and widespread species in Sicily. It was recorded from Sicily by Romano (1849), (Palermo, Passo di Rigano, Ficuzza: Luigioni and Tirelli 1912; Vitale 1935).

*Cassida deflorata* Suffrian, 1844

Chorotype – MED

Host plants – AST (*Jacobaea maritima*, *Cirsium dyris*, *Cynara cardunculus scolymus*, *C. cardunculus cardunculus*, *Arctium lappa*, *Carduus tenuiflorus*, *Silybum marianum*)

Trophic category – POL

New records – **Messina**: Capo Tindari, Olivieri, Laghetti Marinello, 18.X.2002, Baviera C. (BCPC); ditto, 02.III.2002, Baviera C. (BCPC); Monti Peloritani, Monte Scuderi, 1100m a.s.l., 31.V.2005, Baviera C. (BCPC); Monti Nebrodi, Monte Soro, 1500m a.s.l., in pitfall trap, 05.VIII-09.IX.2005; Baviera C. (BCPC); ditto, 1800m a.s.l., 22.VI.2007; ditto, 02.VI.2007; ditto, 27.VI.2008, sifting; Biviere di Cesarò, 1200m a.s.l., 27.V.2006, Baviera C. (BCPC); ditto, 26.V.2004; Portella Maulazzo, 1400m a.s.l., 17.V.2001, Baviera C. (BCPC); Capizzi, Portella dell'Obolo 1500m a.s.l., 25.VI.2007, Baviera C. (BCPC); **Catania**: Raddusa, Libertina, 28.V.2007, Diotti L. (DLPC); Monte Etna, versante Est, Bosco Cerrita, 1500m a.s.l., 01.VII.2004, Baviera C. (BCPC); Randazzo, str. per Linguaglossa 31.V.2007, Diotti L. (DLPC); Fiume Dittaino ponte stat. 417, 08.V.1980, Diotti L. (DLPC); **Palermo**: Madonie, Piano Zucchi, 1100m a.s.l., 03.VI.2000, Baviera C. (BCPC); Piano Battagliesa, 16. V. 2008, Baviera C. and Rando A. (BCPC); Piano Battaglia, 1300m a.s.l., 02.VI.2008, Cornacchia P. (PCPC); ditto, 10.VI.1993, (SDPC); Bosco Ficuzza, 700/900m a.s.l., 24.V.1996, (SDPC).

**Notes.** Another very common and widespread species in Sicily, it was recorded from the Island by Bertolini (1872), Assenza (1892), Bertolini (1904), and Vitale (1935). We can confirm the presence of this species in Sicily, which was doubtfully recorded in the Italian Checklist (Biondi *et al.* 1995).

*Cassida ferruginea* Goeze, 1777

Chorotype – SIE

Host plants – AST (*Pulicaria dysenterica*)

Trophic category – MON

**Notes.** This hygrophilous species was recorded from Sicily by Bertolini (1872), Assenza (1892), Ragusa (1894), and Vitale (1935).

*Cassida inopinata* Sassi and Borowiec, 2006

Chorotype – EUR

Host plants – AST (*Centaurea* spp.)

Trophic category – MON

New records – **Siracusa**: Lentini, 28.V.2007, Monzini V. (MVPC).

**Notes.** This rather recently described species is new from Sicily as was known up to Basilicata in Southern Italy (Sassi and Borowiec 2006).

*Cassida inquinata* Brullé, 1832

Chorotype – PAL

Host plants – AST (*Matricaria* spp., *Anthemis* spp., *Cladanthus* spp., *Chamaemelum nobile*)

Trophic category – OLI

New records – **Catania**: Raddusa, Lago Ogliastro, 28.V.2007, Diotti L. (DLPC); Raddusa, Libertina, 28.V.2007, Diotti L. (DLPC); Enna: Agira, 29.V.2007, Monzini V. (MVPC); **Siracusa**: Buccheri, Iblei, 650m a.s.l., Angelini F. (AFMC); **Palermo**: Fiume Pollina, 28.V.1972, Romano M. (BCPC); Piana Albanesi Portella S. Agata, 750m a.s.l., 01.VI.2008, Cornacchia P. (PCPC); **Trapani**: Calatafimi dint., 21.V.2010, Diotti L. (DLPC).

**Notes.** A xerophilous species recorded from Sicily by Vitale (1920), Luigioni (1929), and Vitale (1935).

*Cassida major* Kraatz, 1874

Chorotype – WME

Host plants – AST (*Centaurea acaulis*)

Trophic category – MON

New records – **Messina**: Nebrodi, Floresta, 24.VI.2007 (SDPC); **Catania**: Monte Etna vers. Sud Pedara, 11.IV.1949 (SDPC)

**Notes.** A rare species in Sicily, recorded sub *C. humeralis* Kraatz by Winkler (1930).

*Cassida rubiginosa* O.F. Müller, 1776

Chorotype – PAL

Host plants – AST (*Cirsium* spp., *Carduus* spp., *Arctium lappa*, *Centaurea* spp., *Onopordum* spp., *Silybum marianum*, *Serratula tinctoria*, *Cynara cardunculus scolymus*, *Saussurea* spp.)

Trophic category – OLI

New records – **Messina**: Monti Peloritani, Monte Antennammare, 1133m a.s.l., 27.VII.1999, Baviera C. (BCPC); ditto, 22.III.2004; Monti Nebrodi, San Fratello, 1300m a.s.l., 17.V.2002, Baviera C. (BCPC); Biviere di Cesarò, 31.V.2003, Baviera C. (BCPC); ditto, 19.VI.2002, Baviera C. (BCPC); **Catania**: Castiglione di Sicilia, Fiume Alcantara, Cuba di Santa Domenica, 28.V.2010, Baviera C. (BCPC); **Siracusa**: Cassibile, 10.V.1970, Monzini V. (MVPC); **Palermo**: Madonie, Piano Zucchi, 21.VI.2001, Baviera C. (BCPC); Sicani, Bosco Ficuzza, 700m a.s.l., 01.VI.2008, Cornacchia P. (CPPC); ditto, 05.V.2007, Angelini F. (AFMC).

**Notes.** A species recorded from Sicily by Bertolini (1872, sub *C. vibex*), Ragusa (1894), and Vitale (1935).

*Cassida sanguinolenta* O.F. Müller, 1776

Chorotype – PAL

Host plants – AST (*Achillea millefolium*, *Tanacetum vulgare*.)

Trophic category – OLI

New records – **Messina**: Monti Peloritani, Monte Antennammare, 1133m a.s.l., 05.V.2004, Baviera C. (BCPC); Monti Nebrodi, Biviere di Cesarò, 26.V.2004, Baviera C. (BCPC); **Catania**: Etna Nord Linguaglossa, 22.V.2000, (SDPC); Randazzo, str. per Linguaglossa, 31.V.2007, Diotti L. (DLPC).

**Notes.** This species was recorded from the neighborhood of Palermo (Passo di Rigano, Ficuzza: Luigioni and Tirelli (1912) and from Sicily by Vitale (1935).

*Cassida seladonia* Gyllenhal, 1827

Chorotype – EUR

Host plants – AST (*Filago* spp., *Helichrysum* spp., *Gnaphalium* spp., *Artemisia* spp., *Achillea* spp., *Tanacetum* spp.)

Trophic category – POL

New records – **Siracusa**: Melilli, Torri Belluzza, 20.VI.1969 (SDPC).

**Notes.** The presence of this species in Sicily was recorded by Bertolini (1872), but Vitale (1935) considered wrong this record.

*Cassida nobilis* Linné, 1758

Chorotype – SIE

Host plants – AMA, URT, AST (*Tripleurospermum inodorum*, CHE (*Chenopodium album*, *Oxybasis rubra*, *Beta vulgaris*, *Atriplex* spp.), CAR (*Stellaria media*, *Silene vulgaris*, *Honckenya peploides*)

Trophic category – POL

New records – **Catania**: Raddusa, Lago Ogliaastro, 28.V.2007, Diotti L. (DLPC).

**Notes.** A species recorded from Sicily by Romano (1849), Bertolini (1904), Luigioni and Tirelli (1912), and Vitale (1935). We are able to confirm the presence of this species in Sicily, which was doubtfully recorded in the Italian Checklist (Biondi *et al.* 1995).

*Cassida pusilla* Waldt, 1835

Chorotype – MED

Host plants – AST (*Pulicaria dysenterica*, *Dittrichia viscosa*, *Pentanema montanum*)

Trophic category – POL

**Notes.** We were unable to see Sicilian specimens of this species, recorded from Sicily by Bertolini (1872, 1904), Luigioni:1929, Vitale:1935. Vitale recorded the subspecies *C. pusilla pupillata* Bohm from two localities in Messina province: Villerica (Naso), 12.V.1932 and Sicaminò

(Gualtieri), 16.VI.1932 (Vitale 1940).

*Cassida vittata* Villers, 1789

Chorotype – PAL

Host plants – AST (*Chenopodium* spp., *Beta* spp., *Salicornia* spp., *Tanacetum vulgare*.)

Trophic category – OLI

New records – **Messina**: Monti Nebrodi, Biviere di Cesarò, 11.IV.2002, Baviera C. (BCPC); **Catania**: Raddusa, Lago Ogliaastro, 28.V.2007, Diotti L. (DLPC); **Caltanissetta**: Gela, Biviere, 29-30.V.2006, Baviera C. (BCPC); **Agrigento**: Portella Rocco Corvo, 15.V.1996, (SDPC); Lampedusa, Cala Sponze, 08.VI.2003, Borroni (BPC); **Palermo**: Madonie, Baita del Faggio, 1400m a.s.l., 08.V.2013, Baviera C. (BCPC); **Trapani**: Calatafimi dint., 23.V.2010, (SDPC); R.N.O. Saline di Trapani e Paceco, Fiume Lenzi Baiata, 29.IV.2004, Baviera C. (BCPC); San Vito Lo Capo, R. N. O. "Zingaro", 13-14.XI.2003, Baviera C. (BCPC); Isole Egadi, Levanzo, 23.IV.2007, Baviera C. (BCPC); Isole Egadi, Favignana, 23.IV.2007, Baviera C. (BCPC).

**Notes.** A species recorded from Sicily since a long time (Bertolini 1872; Siracusa: Fiori 1906; Luigioni 1929; Vitale 1935). Also recorded from Favignana by Daccordi and Ruffo (1975).

*Cassida margaritacea* Schaller, 1783

Chorotype – SIE

Host plants – CAR (*Silene vulgaris*, *S. latifolia*, *Saponaria officinalis*, *Spergula arvensis*); AST ((adults only): *Helichrysum margaritaceum*, *Helichrysum arenarium*, *Centaurea decipiens*, *C. scabiosa*, *C. cyanus*, *C. stenolepis*); LAM (*Thymus longicaulis*).

Trophic category – POL

New records – **Messina**: Monti Peloritani, Monte Antennammare, 1133m a.s.l., 23.VII.2000, Baviera C. (BCPC); Monti Nebrodi, Biviere di Cesarò, 01.VI.2007, Baviera C. (BCPC); Monte Soro, 1800m a.s.l., 21.X.2006, Baviera C. (BCPC); Lago Tre Arie, 1400m a.s.l., 02.VII.2005, Baviera C. (BCPC); **Palermo**: Fiume Pollina, 28.V.1972, Romano M.; Madonie, Piano Zucchi, 19.VII.2006, Baviera C. (BCPC); **Siracusa**: Augusta, 05.VIII.1997, I.S.A. (BCPC); Sicani, Bosco Ficuzza, 01.VI.2008, Cornacchia P. (CPPC).

**Notes.** This species was recorded from Sicily by Romano (1849), Ragusa (1894), and Vitale (1935).

*Cassida subreticulata* Suffrian, 1844

Chorotype – ASE

Host plants – CAR (*Saponaria officinalis*)

Trophic category – MON

**Notes.** This species, was recorded from Sicily by Bertolini (1872) and Luigioni (1929), is quite rare in Italy as a whole. We were unable to see any specimens of this species from Sicily, for this reason its presence in the Island needs further confirmations.

*Cassida viridis* Linné, 1758

Chorotype – ASE

Host plants – LAM (prevalently *Salvia* spp. and *Mentha* spp.)

Trophic category – OLI

**Notes.** A species recorded since a long time from Sicily (Romano 1849; Bertolini 1904; Luigioni 1929; Vitale 1935). We are unable to see any specimen of this species from Sicily.

*Cassida hemisphaerica* Herbst, 1799

Chorotype – EUR

Host plants – CAR (*Silene* spp., *Dianthus* spp.)

Trophic category – OLI

New records – **Messina:** Monti Peloritani, Monte Antennammare, 1133m a.s.l., 26.VI.2001, Baviera C. (BCPC); ditto, 17.X.2002, Baviera C. (BCPC); **Palermo:** Sicani, Bosco Ficuzza, 20.VI.2001, (SDPC).

**Notes.** A species recorded from Sicily by Luigioni (1929) and Vitale (1935). It was also collected in Levanzo by Daccordi and Ruffo (1975).

**Hispini Gyllenhal, 1813***Hispa* Linné, 1767*Hispa atra* Linné, 1767

Chorotype – PAL

Host plants – POA (*Poa compressa*, *Elymus repens*, *Agrostis* spp.)

Trophic category – POL

New records – **Messina:** Città, Annunziata, 06.IV.1998, Baviera C. (BCPC); Torre Faro contr. Granatari, 12.IV.1992, Baviera C. (BCPC); ditto, 22.III.2010; Capo Rasocolmo, Santo Saba, 01-15.VI.2004, in pitfall trap, Baviera C. (BCPC); Monti Peloritani, Monte Antennammare, 1133m a.s.l., 17.X.2002, Baviera C. (BCPC); ditto, 05.V.2004; Itala, Monte Scuderi, 1100m a.s.l., 22.V.2004, Baviera C. (BCPC); Fiume Lampiello, 14.IV.2004, Baviera C. (BCPC); Salice-Urni, 07.IV.2004, Baviera C. (BCPC); Camaro Superiore, 24.IV.2000, Baviera C. (BCPC); Forte San Jachiddu, 375 m a.s.l., 22.III.2010, Baviera C. (BCPC); Monti Nebrodi, Biviere di Cesarò, 26.V.2004, Baviera C. (BCPC); ditto, 01.VI.2007; Rometta, Gimello, San Leone, 29.IV.2000, Baviera C. (BCPC); Montalbano Elicona, Bosco di Malabotta, 23.V.2006, Baviera C. (BCPC); ditto, 23.VI.2006, Baviera C. (BCPC); **Palermo:** Madonie, Piano Battaglietta, 1800m a.s.l., 23.VI.2009, Baviera C. (BCPC); ditto, 24.IV.2008; Monti Sicani, Monte Carcaci, 25.X.2006, Baviera C. (BCPC); **Agrigento:** Monte Cammarata, 1450m a.s.l., 27.V.2007, Baviera C. (BCPC); Monti Sicani, Bisacquino, 530m a.s.l., 28.V.2007, sifting *Olea*, Baviera C. and Bellò C. (BCPC); ditto, 25.XI.2009, sifting *Olea*, Baviera C. and Bellò C. (BCPC); **Trapani:** San Vito Lo Capo, R. N. O. "Zingaro", 23-24.IV.2003, Baviera C. (BCPC)

**Notes.** Probably the commonest and most widespread species of the tribe in Sicily, recorded, sub *Hispella atra* by Romano (1849), Bertolini (1904), Luigioni (1929), and Vitale (1935). Recorded also from Eolie Islands (Alicudi: Lo Cascio *et al.* (2006).

### ***Polyconia* Weise, 1905**

*Polyconia caroli* (Leprieur, 1883)

Chorotype – WME

Host plants – POA (*Hyparrhenia hirta*)

Trophic category – MON

New records – **Messina:** Torre Faro contr. Granatari, 11.VI.1989, Baviera C. (BCPC); ditto, 23-28.IV.2000; ditto, 27.V-05.VI.2000; ditto, 28.IV.2010; ditto, 27.V.2010; Capo Rasocolmo, Santo Saba, 29.V.2011, Baviera C. (BCPC); Capo Tindari, Olivieri, Laghetti Marinello, 10.X.2007, Baviera C. (BCPC); Capo Milazzo, 01-02.VI.2000, Baviera C. (BCPC); Monti Peloritani, Forte San Jachiddu, 375m a.s.l., 27.IV.2011, Baviera C. (BCPC); ditto, 29.IV.2010, Baviera C. (BCPC); ditto, 27.V.2010, Baviera C. (BCPC); ditto, 28.VI.2010, Baviera C. (BCPC).

**Notes.** This is a rare species in Italy known only from Sicily. It was reported sub *P. spinicornis* Kraatz by Gestro (1909) from Palermo (IV.1906, leg. Doderò). Then it was recorded as *P. spissicornis* Kraatz by Luigioni (1929) and thereafter by Aliquò (1975) from Siracusa (Fonte Ciane, II.1966, leg. Aliquò). This last record was corrected in *P. caroli* by Aliquò and Romano (1976). It seems to be quite common in Messina province not far from the sea shore (up to 375 a.s.l., on Peloritani). In Europe this species is recorded only in Italy and Spain.

### ***Di cladispa* Gestro, 1897**

*Di cladispa testacea* (Linné, 1767)

Chorotype – MED

Host plants – CIS (*Cistus* spp., *Helianthemum* spp.)

Trophic category – OLI

New records – **Messina:** Monti Peloritani, Monte Antennammare, 1133m a.s.l., 05.VII.1999, Baviera C. (BCPC); ditto, 17.X.1998; ditto, 17.X.2002; ditto 30.X.2009; Massa San Giovanni, 23.VIII.1997, Baviera C. (BCPC); Forte San Jachiddu, 30.V.2011, Baviera C. (BCPC); ditto, 28.VI.2010; ditto, 28.V.2010; ditto, 21.X.2010; ditto, 29.IX.2010; ditto, 27.X.2011; **Palermo:** Gibilmanna, 10.VIII.1996, Baviera C. (BCPC); **Trapani:** San Vito Lo Capo, R.N.O. "Zingaro", 23-24.IV.2003, Baviera C. (BCPC).

**Notes.** A common and widespread species recorded from Sicily, sub *Hispa testacea*, by Romano (1849), Luigioni (1929), and Vitale (1935).

### ***Leptispini* Fairmaire, 1868**

***Leptispa* Baly, 1858**

*Leptispa filiformis* (Germar, 1842)

Chorotype – MED (Algeria, Greece (Crete), Israel, Italy, Morocco, Spain).

Host plants – POA (*Dactylis glomerata*) CYP (*Carex pendula*, *Scirpus* spp.).

Trophic category – MON

New records – **Palermo**: Madonie, Montaspro, 900m a.s.l., 04.V.1973, Romano M. (BCPC); Piana degli Albanesi, 21.V.1996, Sparacio I. (BCPC); **Catania**: Castel di Judica, 11.V.2015, Baviera C. (BCPC).

**Notes.** This species, recorded from Sicily since a long time (Bertolini 1872, 1904; Luigioni 1929), seems to be rare in Sicily.

**Cryptocephalini Gyllenhal, 1813*****Stylosomus* (*Stylosomus*) Suffrian, 1848**

*Stylosomus* (*Stylosomus*) *corsicus* Rey, 1883

Chorotype – TYR

Host plants – TAM (*Tamarix* spp.).

Trophic category – MON

**Notes.** A tyrrhenian species, described from Corsica and S France, recorded also in Sicily (Bertolini 1899), and quite recently confirmed in Palermo province (Sicani, Bosco Ficuzza by Warchałowski (2007)).

*Stylosomus* (*Stylosomus*) *tamarisci* (Herrich-Schäffer, 1836)

Chorotype – SEU

Host plants – TAM (*Tamarix* spp.).

Trophic category – MON

New records – **Messina**: Marina di Caronia, 27.V.2006, Baviera C. (BCPC).

**Notes.** Suffrian (1848) proposed "tamaricis" as emended name, considering it grammatically more correct. Since then, the proposal was followed by several authors and as such it also appears in the recent Catalogue of Palaearctic Coleoptera (Schöller in Löbl and Smetana (2010)). As a matter of fact, according to the ICZN, the change of the original name has to be considered an unjustified emendation (art. 32.5.1 and art. 33.2.2). This species, known from Sicily since a long time (Rottenberg 1871; Bertolini 1872; Luigioni 1929; Vitale 1932), is widely distributed in Sicily. Reported from Agrigento, Palermo (Madonie: Castelbuono), Catania (Simeto), Sortino (Anapo) (Sassi 2005).

*Stylosomus (Microstylus) minutissimus* (Germar, 1823)

Chorotype – MED

Host plants – ERI (*Erica arborea*).

Trophic category – MON

New records – **Messina**: Monti Peloritani, Forte San Jachiddu, 375 m a.s.l., 30.V.2011, Baviera C. (BCPC); ditto, 27.V.2010; Peloritani, Rometta superiore, 530m a.s.l., 24.IV.2010, on *Quercus*, Baviera C., (BCPC); **Trapani**: Calatafimi, Bosco Angimbè, 09.III.2009, Baviera C. (BCPC); Pantelleria, Montagna Grande, 27.IV.2009, Diotti L. (DLPC); Pantelleria, Punta Spadillo, 29.IV.2009, Diotti L. (DLPC); Calatafimi, Bosco Angimbè, 350m a.s.l., 09.III.2009, Baviera C. (BCPC).

**Notes.** This species was recorded for Sicily by Luigioni (1929) and Vitale (1932) and thereafter only from Palermo (Madonie, Collesano: Sassi 2005). Recorded also from Pantelleria (Liebmann 1962; Ratti 1987).

***Pachybrachis* Chevrolat, 1836***Pachybrachis exclusus* Weise, 1886

Chorotype – APP

Host plants – FAB (*Genista* spp., *Cytisus* spp.).

Trophic category – OLI

New records – **Messina**: Monti Peloritani, Forte San Jachiddu, 375 m a.s.l., 28.VI.2010, Baviera C. (BCPC); ditto, 410m a.s.l. 30.VI.2010, Baviera C. (BCPC); Campo Italia, 21.IV.2010, Baviera C. (BCPC); Massa San Giovanni, 430m a.s.l., 12.VIII.2011, Baviera C. (BCPC); Musolino, 700m, 04.VI.2000, Baviera C. (BCPC); Monte Antennammare, 1133m a.s.l., 05.VII.1999, Baviera C. (BCPC); Monte Scuderi, 31.V.2005, Baviera C. (BCPC); Acqualadrona, 30.V.2000, Baviera C. (BCPC); Montalbano Elicona, Bosco di Malabotta, 23.VI.2006, Baviera C. (BCPC); Monti Nebrodi, Sella Tre Arie, 1350m a.s.l., 04.VI.2009, Baviera C. (BCPC); San Fratello, 1300m a.s.l., 17.V.2001, Baviera C. (BCPC); ditto, 20.V.2000, Baviera C. (BCPC); Portella Moulazzo, 25.VI.2001, Baviera C. (BCPC); Biviere di Cesarò, 1278 m a.s.l., 19.VI.2002, Baviera C. (BCPC); ditto, 03.VII.1999, Baviera C. (BCPC); **Catania**: Linguaglossa, 08.VI.2000, Baviera C. (BCPC); Etna Sud, 28.V.2010, Diotti L., (DLPC); **Palermo**: Madonie, Piano Zucchi, 1100m a.s.l., 03.VI.2000, Baviera C. (BCPC); ditto, 19.VI.2006, Baviera C. (BCPC); Polizzi Generosa, 31.V.2007, Baviera C. (BCPC); Pizzo Carbonara, 21.VI.2001, Baviera C. (BCPC).

**Notes.** A common species in Sicily (Vitale 1920; Luigioni 1929; Vitale 1932) recorded as *P. exclusus etruscus* Weise, 1886. Recorded from Messina (Peloritani and Nebrodi, Castell'Umberto: Burlini 1968), Catania (Etna) and Palermo (Madonie and Sicani) (Sassi 2005).

*Pachybrachis flexuosus* Weise, 1882

Chorotype – SEU

Host plants – FAB (*Quercus* spp.)

Trophic category – MON

New records – **Messina**: Monti Peloritani, Rometta Superiore, 530m a.s.l., su *Quercus*, 24.IV.2010,

Baviera C. (BCPC).

**Notes.** A species firstly reported from Sicily by Bertolini (1899), thereafter also by textcites-Luigioni:1929, Vitale:1932. This is the first locality reported for Sicily.

*Pachybrachis hieroglyphicus* (Laicharting, 1781)

Chorotype – SIE

Host plants – FAB, SAL (*Salix* spp., *Populus* spp., BET (*Betula* spp.)

Trophic category – POL

**Notes.** A species quite uncommon in Sicily, until now only recorded from Palermo (Cammarata, Cefalù, Sicani, Ficuzza by Vitale (1920, 1928) and Monte Pellegrino by Burlini:1968) and Messina (Nebrodi, Portella di Femmina Morta by Sassi (2005)).

*Pachybrachis hippophaes* Suffrian, 1848

Chorotype – SEU

Host plants – SAL (*Salix* spp.)

Trophic category – MON

New records – **Messina:** Francavilla di Sicilia, Fiume Alcantara, Le Gurne, 28.V.2010, Baviera C. (BCPC).

**Notes.** Recorded from Sicily by Luigioni (1929) and Vitale (1932). Only one locality recorded until now (Messina, Scala: Vitale 1928). *Hippophaë fluviatilis* (Elaeaginaceae), has to be considered very unlikely as a host plant.

*Pachybrachis osellai* Daccordi and Ruffo, 1975

Chorotype – SICI

Host plants – FAB

Trophic category – MON

New records – **Trapani:** Isola di Marettimo, 14.V.2006, Baviera C. (BCPC).

**Notes.** An endemic species only known from Levanzo and Marettimo in Egadi Islands (Daccordi and Ruffo 1975; Sassi 2005).

*Pachybrachis ruffoi* Burlini, 1956

Chorotype – APP

Host plants – FAB

Trophic category – MON

New records – **Messina:** Nebrodi, Floresta, 1088m a.s.l., 21.VII.2010, Baviera C. (BCPC).

**Notes.** This species is recorded in Sicily with the nominal subspecies from Palermo (Fiume Oreto, Madonie, Petralia Sottana: Burlini 1968), Catania (Randazzo: Burlini 1968). Never

reported before from Messina province.

*Pachybrachis scriptus* Herrich-Schaeffer, 1838

Chorotype – APP

Host plants – FAB

Trophic category – MON

**Notes.** This species is recorded in Sicily with the nominal subspecies from Catania (Nicolosi: Burlini 1968) and Trapani (Selinunte: Sassi 2005). According to some ancient data, the species was collected on *Poterium spinosum* (Rosaceae).

*Pachybrachis siculus* Weise, 1891

Chorotype – SICI (and Malta)

Host plants – FAB

Trophic category – MON

New records – **Siracusa:** Vendicari, sifting *Olea*, 1.III.2013, Baviera C. Bellò C. (BCPC); **Palermo:** Capaci, città, orto, 11.IX.1968, Romano M. (BCPC); Madonie, Piano Zucchi, 30.V.2007, Monzini V. (MVPC); **Trapani:** San Vito Lo Capo, R.N.O. "Zingaro", 19-21.V.2003, Baviera C. (BCPC); ditto, 23-25.VI.2003, ditto, 13-14.XI.2003, Baviera C. (BCPC).

**Notes.** This species was described from Sicily and repeatedly reported (Bertolini 1899; Luigioni 1929; Vitale 1932) without further data. Afterwards, it was recorded from Palermo (Passo di Rigano: Luigioni and Tirelli 1912; Oreto; Madonie: Piano Zucchi: Sassi 2005; Madonie, Piano Battaglia, and Sicani, Piana degli Albanesi: Burlini 1968; Siracusa (Palazzolo Acreide, Iblei Bosco Bauli): Sassi 2005). Also known from Pantelleria (Liebmann 1962), Cuddia di Mida (Ratti 1987), and Malta (Sassi 2012). Quite recently, southern Sicily populations (Agrigento) were provisionally reported sub the ancient name of *P. siculus* "ab. imitator", but suggesting they could turn out to be a different taxon on the basis of minute but perceivable morphological differences (Sassi 2012). Never recorded before from Trapani mainland.

*Pachybrachis simius* Marseul, 1875

Chorotype – WME

Host plants – UNK

Trophic category – UNK

**Notes.** Recorded from Sicily by Pic (1903). Also reported from Lampedusa (Lo Valvo and Massa 1995). The host plant of this species is still unknown, it might be *Thymus* spp. or *Artemisia* spp., according to Petitpierre (2000) as observed for some of the closest species.

*Pachybrachis testaceus* Perris, 1865

Chorotype – WME

Host plants – ANA

Trophic category – MON

**Notes.** This species was recorded from Sicily by Vitale (1932), and doubtfully recorded from Lampedusa (Ragusa 1892), teste Lo Valvo and Massa (1995).

### ***Cryptocephalus (Burlinius) Lopatin, 1965***

*Cryptocephalus (Burlinius) blanduloides* Normand, 1947

Chorotype – WME

Host plants – ERI (*Erica arborea*)

Trophic category – MON

**Notes.** This species is recorded, until now, only from Pantelleria (Sassi 2005).

*Cryptocephalus (Burlinius) connexus* Olivier, 1807

Chorotype – TUE

Host plants – UNK

Trophic category – UNK

New records – **Palermo:** Madonie, Piano Battaglietta, 16.V.2008, Baviera C. (BCPC).

**Notes.** This species was recorded, firstly from Sicily without further data (Luigioni 1929; Vitale 1932), and afterwards from Eolie Islands (Lipari: Lo Cascio *et al.* 2006). Only recently recorded from Palermo without more data by Schöller (2020), which is the first locality of this species known in Sicilian mainland.

*Cryptocephalus (Burlinius) fulvus* (Goeze, 1777)

Chorotype – WPA

Host plants – API (*Ridolfia segetum*); SAL; FAG; TAM; ERI

Trophic category – UNK

New records – **Messina:** Torre Faro contr. Granatari, 07.IV.1994, Baviera C. (BCPC); Monti Peloritani, Monte Antennamare, 1133m a.s.l., 16.V.2007, Baviera C. (BCPC); Montalbano Elicona, 1300m a.s.l., 23.V.2006, Baviera C. (BCPC); Monti Nebrodi, Floresta, 1100m a.s.l. 13.VIII.2002, Baviera C. (BCPC); Lago Trearie 1450m a.s.l., 02.VII.2015, Baviera C. (BCPC); ditto, 1435m a.s.l., Baviera C. (BCPC); Biviere di Cesarò, 26.V.2004, Baviera C. (BCPC); Isole Eolie, Vulcano, 09-10.V.2007, Baviera C. (BCPC); Salina, 10-12.V.2007, Baviera C. (BCPC); **Catania:** Castiglione di Sicilia, Fiume Alcantara, Cuba di Santa Domenica, 19.V.2010, Baviera C. (BCPC); Monte Etna vers. Nord, Piano Provenzana dint., 2100m a.s.l. on *Betula aetnensis*, 14.VI.2002, Baviera C. (BCPC); **Siracusa:** Lentini Fiume Gornalunga, 28.V.2007, Diotti L. (DLPC); **Caltanissetta:** Biviere di Gela, 29-30.V.2006, Baviera C. (BCPC); **Palermo:** Madonie, Piano Battaglietta, 1700m a.s.l., 16.V.2008, Baviera C. Rando A. (BCPC); Sicani, Monte Cammarata, 1000m a.s.l., 27.V.2007, Baviera C. (BCPC); Bosco Ficuzza, 29.V.2007, Baviera C. (BCPC); **Trapani:** R.N.O. Saline di Trapani e Paceco, Salina “Anselmo”, 28.IV.2004, Baviera C. (BCPC); ditto, Salina “Vecchia”, 29.IV.2004, Baviera C. (BCPC); ditto, Fiume Lenzi Baiata, 29.IV.2004, Baviera C. (BCPC); Calatafimi dint., 23.V.2010, Diotti L. (DLPC).

**Notes.** This species is one of the commonest and widely distributed *Cryptocephalus* (*Burlinius*) of Sicily. Reported from Sicily since a long time (Bertolini 1872; Vitale 1932), was recorded from Agrigento, Caltanissetta, Catania, Enna, Messina (Nebrodi: Burlini 1956), Siracusa (Burlini 1956) and Palermo provinces, also known from Pantelleria Island (Sassi 2005). Never recorded before from Peloritani, Alcantara river, Eolie Islands, Trapani province.

*Cryptocephalus* (*Burlinius*) *labiatus* (Linné, 1761)

Chorotype – SIE

Host plants – SAL; FAG; COR; MYR; ROS; ANA

Trophic category – POL

New records – **Messina:** Monti Peloritani, Musolino, 700m a.s.l., 04.VI.2000, Baviera C. (BCPC).

**Notes.** Reported from Sicily by Burlini (1956) and Vitale (1932), it is known only from Messina province (Peloritani) (Sassi, 2005).

*Cryptocephalus* (*Burlinius*) *macellus* Suffrian, 1860

Chorotype – TEM

Host plants – FAG (*Quercus* spp.); ERI (*Erica* spp.); CIS (*Cistus* spp.); ANA (*Pistacia* spp.)

Trophic category – POL

New records – **Messina:** Torre Faro contr. Granatari, 13.IV.2001, Baviera C. (BCPC); ditto, 07.IV.1994, Baviera C. (BCPC); Monti Peloritani, Forte San Jachiddu, 375 m a.s.l., 30.VI.2010, Baviera C. (BCPC); Monti Peloritani, Monte Antennamare, 1133m a.s.l., 06.X.2008, sifting *Quercus*, Baviera C. (BCPC); Monti Nebrodi, Monte Soro, 1700m a.s.l., Baviera C. (BCPC); Portella Moulazzo, 23.VI.2001, Baviera C. (BCPC); Peloritani Trupiano, 11.III.2015, Baviera C. (BCPC); Isole Eolie, Salina, 10-12.V.2007, Baviera C. (BCPC); Isole Eolie, Vulcano, 09.V.2007, Baviera C. (BCPC); **Catania:** Monte Etna vers. Nord, Piano Provenzana dint., 2100m a.s.l. on *Betula aetnensis*, 14.VI.2002, Baviera C. (BCPC); Linguaglossa, 08.VI.2000, Baviera C. (BCPC); ditto, 28.IV.2000, Baviera C. (BCPC); Pendio Sud Etna, 28.V.2010, Diotti L. (DLPC); Caltagirone S. Cono, 02.IV.2015, Baviera C. (BCPC); Castel di Judica, 700m, on *Quercus*, 11.V.2015, Baviera C. (BCPC); **Enna:** Agira, 455m a.s.l., 17.III.2013, sifting *Olea*, Baviera C. and Bellò C. (BCPC); **Agrigento:** Oasi Torre Salsa, 23.IV.2010, Baviera C.; **Palermo:** Madonie, Piano Zucchi, 22.VI.2001, Baviera C. (BCPC); Portella Colla, 1450m a.s.l., 03.VI.2000, Baviera C. (BCPC); Baita del Faggio, 1300m a.s.l., 18.V.2013, sifting *Ilex aquifolium*, Baviera C. (BCPC); Isola di Ustica, 28-29.IX.2002, Baviera C. (BCPC); **Trapani:** Castellammare del Golfo, RNO Zingaro, 23-24.IV.2003, Baviera C. (BCPC); Custonaci, Visicari, Monte Sparagio, 24.V.2010, Diotti L. (DLPC); Isole Egadi, Marettimo, 22.X.2006, Baviera C. (BCPC); ditto, 14-16.V.2006, Baviera C. (BCPC).

**Notes.** This species is very common and widely distributed in Sicily, recorded by Bertolini (1872), Luigioni (1929), and Vitale (1932). It was reported from Messina (Burlini 1956), Catania (Etna); Siracusa (Palazzolo Acreide); Palermo (Madonie and Sicani); Ustica, Pantelleria and Lipari (Sassi 2005).

*Cryptocephalus* (*Burlinius*) *ocellatus ochropezus* Suffrian, 1853

Chorotype – SICI

Host plants – SAL (*Salix* spp., *Populus* spp.), COR (*Corylus* spp.), FAG (*Quercus* spp.), BET (*Betula*

spp., *Alnus* spp.), ULM (*Ulmus* spp.)

Trophic category – POL

New records – **Messina:** Monti Peloritani, Monte Scuderi, 1100m a.s.l., 25.VI.2005, Baviera C. (BCPC).

**Notes.** This endemic subspecies, described by Suffrian as species and this way recorded from Sicily since a long time (Bertolini 1872; Luigioni 1929; Vitale 1932) was recorded in the Island from Messina (Peloritani and Nebrodi) and Palermo (Oreto river, Madonie and Sicani) (Sassi 2005).

*Cryptocephalus (Burlinius) ochroleucus* Fairmaire, 1859

Chorotype – TEM

Host plants – SAL (*Salix* spp., *Populus* spp.)

Trophic category – OLI

**Notes.** A species considered as quite common in Sicily by Sassi (2012).

*Cryptocephalus (Burlinius) plantaris* Suffrian, 1868

Chorotype – SICI (and Malta)

Host plants – UNK

Trophic category – UNK

**Notes.** A Sicilian endemic species, only known from Siracusa (Iblei, P.ta Terrana) and Trapani (Selinunte) (Sassi 2005). Recorded also from Malta (Sassi and Zoia 2002; Sassi 2012).

*Cryptocephalus (Burlinius) politus* Suffrian, 1853

Chorotype – WME

Host plants – TAM (*Tamarix* spp.); ANA (*Pistacia* spp.)

Trophic category – POL

New records – **Catania:** Raddusa, Libertina, 29.V.2007, Diotti L. (DLPC); **Agrigento:** P.Ila Rocco Corvo, 162m a.s.l., (SDPC); **Siracusa:** Lentini Fiume Gornalunga 28.V.2007, Diotti L. (DLPC); **Palermo:** Madonie, Isnello Piano Zucchi 1100m a.s.l., 17.VII.2016, Baviera C. (BCPC); **Trapani:** Pantelleria, Lago Specchio di Venere, 28.IV.2009, Diotti L. (DLPC).

**Notes.** Recorded from Sicily by Bertolini (1899), Luigioni (1929), and Vitale (1932), it is known from Palermo (Ficuzza: Burlini 1956), Enna (Nebrodi, F.ra Troina), Messina (Piano Torre; Rodia; Sinnaro) (Sassi 2005). Biology is little known. *Tamarix* and *Pistacia* could be true host plant.

*Cryptocephalus (Burlinius) pulchellus* Suffrian, 1848

Chorotype – WME

Host plants – FAB (Probably on *Lotus* spp.)

Trophic category – MON

**Notes.** A species reported from Sicily sub *C. blandulus* by Suffrian (1848), Bertolini (1899), Luigioni (1929), and Vitale (1932) with the singleton locality of “Pachino” (Burlini 1956).

*Cryptocephalus (Burlinius) pygmaeus vittula* Suffrian, 1848

Chorotype – SEU

Host plants – LAM (*Origanum* spp., *Thymus*, spp. *Satureja* spp., *Mentha* spp.)

Trophic category – POL

New records – **Messina:** Forte San Jachiddu, 375m a.s.l., 28.VI.2010, Baviera C. (BCPC); Monti Peloritani, Monte Antennamare, 1133m a.s.l., 05.VII.1999, Baviera C. (BCPC); Montalbano Elicona, 1300m a.s.l., 25.VII.2006, Baviera C. (BCPC).

**Notes.** In Sicily this subspecies was recorded by Vitale (1932). It was also reported from Palermo (Madonie, Geraci), Messina (Peloritani: Bosco di Malabotta; Colle San Rizzo; Torrente Corsari, Castanea; Torrente Niceto; Nebrodi: Mistretta) by Sassi (2005).

*Cryptocephalus (Burlinius) ragusanus* Roubal, 1912

Chorotype – WME

Host plants – FAG (*Quercus* spp.)

Trophic category – MON

New records – **Messina:** Nebrodi Capizzi Tassita, 1450m a.s.l., 29.V.2015, Baviera C. (BCPC); **Catania:** Caltagirone, San Cono, 02.IV.2015, Baviera C. (BCPC); Castel di Judica, 700m 11.V.2015, Baviera C. (BCPC); **Caltanissetta:** Sughereta di Niscemi, 300m a.s.l., 02.III.2013, Baviera C. (BCPC); **Siracusa:** Vendicari, 20m a.s.l., 01.III.2013, Baviera C. (BCPC); **Palermo:** Vallone Zangara, sifting *Tymus e Lentiscus*, 10.III.2009, Baviera C. (BCPC); **Trapani:** Castellammare del Golfo, RNO Zingaro, 23-24.IV.2003, Baviera C. (BCPC); Custonaci, Visicari, Monte Sparagio, 24.V.2010, Diotti L. (DLPC).

**Notes.** An uncommon but widespread species in Sicily, reported from Sicily by Bertolini (1899), Roubal (1912), and Luigioni (1929). Distribution: Siracusa (Pachino: Burlini 1956; Iblei Bosco Bauli: Sassi 2005), Palermo (Sicani, Ficuzza Ragusa 1882; Marineo, Bosco del Cappelliero: Sassi 2005; Madonie, Castelbuono: Ragusa 1882; Burlini 1956; Gibilmanna: Sassi 2005), and Trapani (Selinunte: Sassi 2005).

*Cryptocephalus (Burlinius) scapularis* Suffrian, 1848

Chorotype – SEU

Host plants – SAL (*Salix* spp.)

Trophic category – MON

New records – **Messina:** Monti Peloritani, Puntale Bandiera, 10.VI.2006, Baviera C. (BCPC); Monti Nebrodi, Biviere di Cesarò, 1200m a.s.l., 02.VII.2005, Baviera C. (BCPC); Floresta, 1088 m a.s.l., 21.VII.2010, Baviera C. (BCPC); ditto, 29.VI.2010, Baviera C. (BCPC); San Fratello, 1200m a.s.l., 07.V.2013, Baviera C. (BCPC); Caronia, 1200, 20.V.2015, Baviera C. (BCPC); Mojo Alcantara, Fiume Alcantara, 11.VI.2004, Baviera C. (BCPC); **Catania:** Calatabiano San Marco, Foce Alcantara, 19.V.2010, Baviera C. (BCPC); Castiglione di Sicilia, Fiume Alcantara, Cuba di Santa Domenica, 28.V.2010, Baviera C. (BCPC); **Palermo:** Madonie, Piano Zucchi, 19.VII.2006, Baviera C. (BCPC);

Bosco Pomieri, 1450m a.s.l., 21.VII.2016, Baviera C. (BCPC); Piano Battaglia, 15.VII.2016, Baviera C. (BCPC); Piano Sempria, 1260m a.s.l., 13.VI.2013, Baviera C. (BCPC).

**Notes.** A species reported from Sicily by Bertolini (1899), Luigioni (1929), and Vitale (1932). It is also known from Messina (Scala: Burlini 1956; Nebrodi, Floresta: Sassi 2005); Catania (Randazzo: Sassi 2005); Palermo (Oreto: Sassi 2005; Sicani, Ficuzza: Burlini 1956; Alpe Cucco: Sassi 2005; Piana degli Albanesi: Sassi 2005; Madonie, Piano Zucchi: Sassi 2005).

*Cryptocephalus (Cryptocephalus) bimaculatus* Fabricius, 1781

Chorotype – WME

Host plants – FAB (*Genista* spp., *Spartium* spp., *Cytisus* spp.).

Trophic category – OLI

New records – **Messina**: Torre Faro contr. Granatari, 30.IV.1990, Baviera C. (BCPC).

**Notes.** This is the first report of this species from Sicily, it has been recorded, until now, up to Calabria (Sassi 2005).

*Cryptocephalus (Cryptocephalus) cicatricosus* Lucas, 1845

Chorotype – WME

Host plants – UNK

Trophic category – UNK

**Notes.** Recorded only from “Sicily” with the nominal subspecies by Marseul (1875), Bertolini (1899), and Luigioni (1929). Never reported thereafter. The current presence of this species in Sicily needs confirmation.

*Cryptocephalus (Cryptocephalus) crassus* Olivier, 1791

Chorotype – WME

Host plants – AST (*Artemisia* spp.), API (*Genista scorpius*)

Trophic category – MON

**Notes.** This species is known only from Lampedusa (Lo Valvo and Massa 1995).

*Cryptocephalus (Cryptocephalus) curvilinea* Olivier, 1808

Chorotype – MED

Host plants – PLU (*Limonium* spp.).

Trophic category – MON

**Notes.** This species is known only from Lampedusa (Sassi 2005).

*Cryptocephalus (Cryptocephalus) falzonii* Burlini, 1956

Chorotype – APP

Host plants – AST, RAN, FAB

Trophic category – POL

**Notes.** Reported from Sicily in Agrigento (Lomi: Leonardi and Sassi 2001). The current presence of this species in Sicily needs confirmation.

*Cryptocephalus (Cryptocephalus) flavipes* Fabricius, 1781

Chorotype – SIE

Host plants – SAL (*Populus alba*); COR; FAG; ROS

Trophic category – POL

New records – **Messina:** Monti Peloritani, Monte Antennamare, 1133m a.s.l., 16.V.2007, sifting *Quercus*, Baviera C. (BCPC).

**Notes.** This species was recorded from Sicily by Bertolini (1904) and Vitale (1932). It is very rare in Sicily, the above reported locality is the only one known (Sassi 2005).

*Cryptocephalus (Cryptocephalus) grohmanni* Suffrian, 1848

Chorotype – APP

Host plants – UNK

Trophic category – UNK

New records – **Messina:** Caronie, Monte Soro, 08.VII.1973, Romano M. (BCPC); Nebrodi Capizzi, Tassita, 1450m a.s.l., on *Crataegus*, 29.V.2015, Baviera C. (BCPC); **Catania:** Castel di Judica, 700m 11.V.2015, Baviera C. (BCPC); Monte Etna vers. Nord, Piano Provenzana dint., 2100m a.s.l. on *Betula aetnensis*, 14.VI.2002, Baviera C. (BCPC).

**Notes.** An Italian endemic species (a singleton specimen is known outside Sicily from Sambiasse, Catanzaro (Burlini 1956)). It was rarely collected only in Northern Sicily. Recorded from Sicily by Suffrian (1848), Ragusa (1922), Luigioni (1929), and Vitale (1932). It is also recorded from Palermo (San Martino: Burlini 1956; Ficuzza: Luigioni 1929; Giacalone: Sassi 2005; Piana degli Albanesi: Sassi 2005); Messina (Peloritani, Montalbano, 26.VII.1905, Leg Vitale: Ragusa 1922; Nebrodi: Sassi 2005).

*Cryptocephalus (Cryptocephalus) ilicis* Olivier, 1808

Chorotype – EME

Host plants – FAG (*Quercus*)

Trophic category – MON

New records – **Messina:** Camaro Superiore, 24.IV.2000, Baviera C. (BCPC); Badiazza, 29.V.2000, Baviera C. (BCPC); Colle San Rizzo, 19.VI.2003, Baviera C. (BCPC); Torre Faro contr. Granatari, 24-30.VI.2001, Baviera C. (BCPC); Acquarone, 30.V.2000, Baviera C. (BCPC); Monti Peloritani, Forte San Jachiddu, 375 m a.s.l., 30.VI.2010, Baviera C. (BCPC); ditto, 28.V.2010, Baviera C. (BCPC); ditto, 29.IV.2010, Baviera C. (BCPC); ditto, 28.VI.2010, Baviera C. (BCPC); Monte Scuderi, 1200m a.s.l., 27.VI.2004, Baviera C. (BCPC); ditto, 31.V.2005, Baviera C. (BCPC); Francavilla di Sicilia, Fiume Alcantara, Le Gurne, 19.V.2010, Baviera C. (BCPC); Milazzo, Capo Milazzo, 1-2.V.2000, Baviera C. (BCPC); **Catania:** Castiglione di Sicilia, Fiume Alcantara, Cuba di Santa Domenica, 19.V.2010, Baviera C. (BCPC); Monte Etna, Linguaglossa, 08.VI.2000, Baviera C. (BCPC); **Palermo:**

Monte Genuardo, 28.V.2007, Baviera C. (BCPC); **Trapani**: Castellammare del Golfo, R. N. O. "Zingaro", 23-25.VI.2003, Baviera C. (BCPC); ditto, 19-21.V.2003, Baviera C. (BCPC).

**Notes.** A species recorded in Italy only in Sicily where it is very common and widespread (Sassi 2005). The species is probably associated with *Quercus*, even if *Pistacia* spp. and *Euphorbia dendroides* have also been pointed as possible host. It was recorded until now from Messina, Catania, Agrigento, Siracusa, Palermo and Trapani provinces (Burlini 1956; Sassi 1994, 2005) and Egadi and Eolie Islands (Daccordi and Ruffo 1975; Lo Cascio *et al.* 2006).

*Cryptocephalus (Cryptocephalus) moraei* (Linné, 1758)

Chorotype – SIE

Host plants – HYP (*Hypericum* spp.)

Trophic category – MON

New records – **Messina**: Monti Peloritani, Montalbano Elicona, Bosco di Malabotta, 1300m a.s.l., 25.VII.2006, Baviera C. (BCPC); Monti Nebrodi, Biviere di Cesarò, 26.V.2004, Baviera C. (BCPC); ditto, 24.VI.2006, Baviera C. (BCPC); ditto, 02.VII.2005, Baviera C. (BCPC); ditto, 19.VI.2002, Baviera C. (BCPC); **Catania**: Etna nord, Linguaglossa, 20.VI.2006, Baviera C. (BCPC); **Siracusa**: Iblei, Bosco Bauli, 500m a.s.l., 23.V.1969; Coll. Museo Verona.

**Notes.** This common and widespread Palaearctic species turned out to be quite rare in Sicily, being recorded, until now, only from Messina (Nebrodi: Sassi 2005), Palermo (Sicani, Ficuzza: Burlini 1956), and (Madonie: Sassi 2005).

*Cryptocephalus (Cryptocephalus) rugicollis* (Linné, 1758)

Chorotype – MED

Host plants – AST

Trophic category – OLI

New records – **Messina**: Mortelle, Lido spiaggia d'oro, 28.IV.2010, Baviera C., Mortelle Canale Inglesi, 28.IV.2010, Baviera C., (BCPC); Santa Saba, Capo Rasocolmo, 26.IV.2010, Baviera C., (BCPC); Torre Faro contr. Granatari, 12.V.2001, Baviera C. (BCPC); ditto, 18-23.V.2000; ditto, 06.IV.1990; ditto, 01.V.1992; ditto, 28.III.1994, ditto, 02.V.1993; Acqualadrone, 22.V.2000, Baviera C. (BCPC); Monti Peloritani, Catarratti 170m a.s.l., 29.IV.2010, Baviera C. (BCPC); Monti Peloritani, Forte San Jachiddu, 375m a.s.l., 28.V.10, Baviera C. (BCPC); ditto, 28.VI.10, Baviera C. (BCPC); ditto, 29.IV.10, Baviera C. (BCPC); ditto, 28.IV.10, Baviera C. (BCPC); Musolino, 700m, 04.VI.2000, Baviera C. (BCPC); ditto, 28.IV.2001, Baviera C. (BCPC); Monte Scuderi, 1200m a.s.l., 22.V.2004, Camino F. (BCPC); Monte Antennammare, 1133m a.s.l., 04.VI.2000, Baviera C. (BCPC); ditto, 27.IV.2010, Baviera C. (BCPC); Montalbano Elicona, Bosco di Malabotta, 23.VI.2006, Baviera C. (BCPC); ditto, 25.VII.2006, Baviera C. (BCPC); Patti, Gioiosa Guardia, 04.VII.1999, Baviera C. (BCPC); Milazzo, Capo, 01-02.V.2000, Baviera C. (BCPC); Monti Nebrodi, Caronie, Bosco di Medda, 24.VI.1973, Romano M. (BCPC); Floresta, Sorg. San Giacomo, 1100m a.s.l., 29.VI.2010, Baviera C. (BCPC); Sella Tre Arie, 1400m a.s.l., 03.VII.2009, Baviera C. (BCPC); Biviere di Cesarò, 1200m a.s.l., 27.V.2006, Baviera C. (BCPC); ditto, 31.V.2003, Baviera C. (BCPC); ditto, 02.VII.2005, Baviera C. (BCPC); Lago Maulazzo, 1400m a.s.l., 05.VIII.2005, Baviera C. (BCPC); Portella Femmina Morta, 1300-1400m a.s.l., 25.V.1998, Callegari, (SDPC); Nebrodi, Portella Miraglia, 1500m a.s.l., 27.V.1998, Callegari (SDPC); Nebrodi, S. Fratello, 31.V.2007, Monzini V., (MVPC); **Catania**: Linguaglossa, 22.V.2000, Baviera C. (BCPC); Etna Nord, Piano Provenzana, Monte Nero, 2100m s.l.m. 08.VI.2000,

Baviera C. (BCPC); ditto, 14.VI.2002, on *Betula aetnensis*, Baviera C. (BCPC); Etna, Randazzo 900m a.s.l., 17.V.2006, Cornacchia P., (SDPC); Caltagirone, Masseria il Salto 380m a.s.l., 24.IV.2000, Zoia S. S. (SDPC); Piana di Catania, S. Martino Piana, 24.IV.2000, Zoia S. S. (SDPC); Ramacca, 290m a.s.l., 06.IV.2003, Cornacchia P., (SDPC); Vizzini, 650m a.s.l., 28.IV.2007, Angelini F. (CACM); Adrano, V.1977, Coll. Museo Verona; Randazzo, Fiume Alcantara, 2.VI.1963, Zoia S., (SDPC); Castiglione di Sicilia, Fiume Alcantara, Cuba di Santa Domenica, 19.V.2010, Baviera C. (BCPC); **Ragusa**: Donnalucata, 30.IV.2007, Angelini F., (CACM); Ispica, V.1959, Zoia S. (SDPC); **Agrigento**: Eraclea Minoa, 02.V.2007, Angelini F. (CACM); **Caltanissetta**: Gela, 16.IV.1998, Cornacchia P. (SDPC); **Siracusa**: Siracusa, 05.IV.2003, Cornacchia P., (SDPC); Portopalo, Punta Correnti, 10.IV.1997, Zoia S. (SDPC); Ris. nat. gr. Villasmundo- Astio Melilli, 29.IV.2000, Angelini F. (CACM); Iblei, Buccheri, 650m a.s.l., 28.IV.2007, Angelini F., (CACM); Sortino Valle Anapo, 255m a.s.l., 14.IV.2010, Bellò C., (SDPC); **Palermo**: Madonie, Piano Zucchi, 1100m a.s.l., 03.VI.2000, Baviera C. (BCPC); ditto, dint, 1200m a.s.l., Baviera C. (BCPC); Baita del Faggio, 1400m a.s.l., 22.VI.2001, Baviera C. (BCPC); Piano Battaglietta, 03. VI. 2000, Baviera C. (BCPC); Sicani, Corleone, Rocca Busambra Sud, 1070m a.s.l., sub *Q. ilex*, 16.IV.2010, Baviera C. (BCPC); Bosco Ficuzza, 29.V.2007, Baviera C. (BCPC); Caltavuturo, Bagni, 1985, Zoia S. (SDPC); Montelepre, P.lla Impiso 530m a.s.l., Zoia S. (SDPC); Caltavuturo, Bagni, 30.V.1985, Zoia S., (SDPC); **Trapani**: Castellammare del Golfo, R. N. O. "Zingaro", 26-29.III.2003, Baviera C. (BCPC) ditto, 22-24.IV.2003; ditto, 19-21.V.2003, Baviera C. (BCPC); Salina "Vecchia", 29.IV.2004, Baviera C. (BCPC); Isole Egadi, Levanzo, 23.IV.2007, Baviera C. (BCPC); Isola di Favignana, 17.V.2006, Baviera C. (BCPC); ditto, 19.IV.2007, Baviera C. (BCPC); Castelvetrano, Lago della Trinità, 80m a.s.l., 2000, Zoia S. (SDPC); Marinella Foce Belice, 2000, Zoia S. (SDPC); Golfo del Cofano, Timpone, 3.VI.2008, Cornacchia P. (SDPC).

**Notes.** This species, probably oligophagous on several genera of Asteraceae, is the commonest and widest distributed species of *Cryptocephalus* of Sicily, widespread and common everywhere also in Sicilian islets (Sassi 2005).

*Cryptocephalus (Cryptocephalus) turcicus* Suffrian, 1847

Chorotype – SEU

Host plants – FAB (*Quercus* spp.)

Trophic category – MON

New records – **Messina**: Peloritani, M. Antennammare, 1133m a.s.l., 16.V.2007, Baviera C. (BCPC); ditto, 02.VI.2004, Baviera C. (BCPC); ditto, 28.V.2016, sifting *Quercus*, Baviera C. (BCPC); Peloritani, M. Scuderi, 1100m a.s.l. 22.V.04, Baviera C. (BCPC); Peloritani, Bosco di Malabotta, 1300m a.s.l., 23.V.2006, Baviera C. (BCPC); Peloritani, Antillo 500m a.s.l., 29.V.2010, Baviera C., (BCPC); Nebrodi, Capizzi, Tassita, 1450m a.s.l., 29.V.2015, sifting *Taxus* and *Ilex*, Baviera C. (BCPC); **Catania**: Etna nord, rif. Brunek, 1300m a.s.l., 16.V.2002, Baviera C. (BCPC); Randazzo, str. per Linguaglossa, 31.V.2007, Diotti L. (DLPC); Castiglione di Sicilia, F. Alcantara, Cuba di Santa Domenica, 19.V.2010, Baviera C., (BCPC); Caltagirone, S. Cono, 02.IV.2015, Baviera C., (BCPC); Etna sud, Adrano Osservatorio, 1200m a.s.l., 12.VI.2011, Baviera C., (BCPC); Nicosia, M. Sambughetti, 1300m a.s.l., sifting *Quercus*, 19.V.2016, Baviera C., (BCPC); **Palermo**: Madonie, Piano Zucchi, 30.V.2007, Diotti L., (DLPC); ditto, 30.V.2007, Angelini F., (CACM); ditto, 27.V.2010, Monzini, (SDPC); Castelbuono, Isnello, 30.V.2007, Diotti L., (DLPC); **Siracusa**: Noto Antica, 24.V.2007, Sassi D. (SDPC).

**Notes.** Xerophilous species, in Sicily recorded from Messina, Palermo, Catania and Siracusa provinces (Burlini 1956; Sassi 2005).

*Cryptocephalus (Pertuisanus) hirticollis* Suffrian, 1847

Chorotype – NAF

Host plants – ANA (*Pistacia lentiscus*)

Trophic category – MON

New records – **Messina**: Torre Faro contr. Granatari, 27.V-05.IV.2000, Baviera C. (BCPC); ditto, 3-20.VIII.2001, Baviera C. (BCPC); 24-30.VI.2001, Baviera C. (BCPC); ditto, 06-16.VI.2001, Baviera C. (BCPC); 08.VII.2002, Baviera C. (BCPC); Monti Peloritani, Monte Scuderi, 1200m a.s.l., 16.VII.2006, Baviera C. (BCPC); Peloritani Forte San Jachiddu, 31.V.2011, Baviera C. (BCPC); **Trapani**: Castellammare del Golfo, R. N. O. "Zingaro", 23-25.VI.2003, Baviera C. (BCPC).

**Notes.** This species was anciently reported from Sicily by Bertolini (1899).

**Species doubtfully recorded from Sicily***Cassida sanguinosa* Suffrian, 1844

**Notes.** A species recorded from Sicily only by Vitale (1932) and never recollected thereafter.

*Cassida vibex* Linné, 1767

**Notes.** A Sibiric-European species, feeding on Asteraceae (*Cirsium palustre*, *C. arvense*, *Tanacetum vulgare*, *Carduus* spp., *Centaurea jacea*, *Arctium* spp., *Tanacetum* spp., *Achillea* spp.) and Chenopodiaceae (*Beta vulgaris*), recorded from Sicily only by Bertolini (1872) and Vitale (1935). After the description of the very similar *C. inopinata*, the presence of this species on the Island needs to be confirmed, since the range of this taxon is at present verified in Southern Italy only up to Calabria (Sassi and Borowiec 2006).

*Pachybrachis cinctus* Suffrian, 1848

**Notes.** A species of Sardinia and Corsica, recorded generically from Sicily only by Bertolini (1899).

*Pachybrachis fulvipes* Suffrian, 1848

**Notes.** A species reported generically from Sicily by Bertolini (1899). The presence in Sicily is very unlikely.

*Cryptocephalus (Burlinius) frontalis* Marsham, 1802

**Notes.** This species is recorded from Sicily by Vitale (1932) but its real presence in Sicily needs confirmation.

*Cryptocephalus (Burlinius) gridellii* Burlini, 1950

**Notes.** Reported from Sicily only by a single doubtful record (Burlini 1956).

*Cryptocephalus (Burlinius) luridicollis* Suffrian, 1868

**Notes.** A species recorded from Sicily only by Luigioni (1929). In all likelihood this record should be attributed to *Cryptocephalus plantaris* Suffrian, 1868. This species, in the light of current knowledge, has to be excluded from Sicilian and Italian fauna

*Cryptocephalus (Burlinius) mystacatus* Rey, 1851

**Notes.** Cited from Sicily by Bertolini (1899), never reported thereafter.

*Cryptocephalus (Burlinius) pallidocinctus* Fairmaire, 1867

**Notes.** A species recorded only generically from Sicily by Ragusa (1882) and Bertolini (1899), never confirmed thereafter.

*Cryptocephalus (Burlinius) pusillus* Fabricius, 1777

**Notes.** Reported from Sicily by Bertolini (1899). The presence in Sicily needs confirmation.

*Cryptocephalus (Burlinius) querceti* Suffrian, 1848

**Notes.** Reported by Bertolini (1899) and Vitale (1932), but its presence in Sicily is highly questionable.

*Cryptocephalus (Cryptocephalus) mariae* Rey, 1851

**Notes.** Cited from Sicily by Bertolini (1899), its presence on the Island is very unlikely.

*Cryptocephalus (Pertuisanus) tristigma* Charpentier, 1825

**Notes.** This prevalently N. African species was anciently reported from Sicily by Bertolini (1899). In all likelihood, this record should be attributed to *Cryptocephalus hirticollis*. Burlini (1956) also reported an ancient Sicilian sample, but maintaining it was probably wrongly labelled. Afterwards, the presence of this species was reported on a single female from San Vito Lo Capo in Trapani province by Sassi (2005). Again, this specimen resulted in being a wrongly identified *C. hirticollis*. For these reasons *C. tristigma* needs to be excluded from Sicilian and Italian fauna.

*Cryptocephalus (Homalopus) coryli* (Linnaeus, 1758)

**Notes.** This species was doubtfully recorded from Sicily by Pic (1903). This real presence is questionable.

*Cryptocephalus (Homalopus) stragula* Rossi, 1794

**Notes.** Reported from Sicily by Bertolini (1899). The presence in Sicily needs confirmation.

#### 4. Conclusions and final remarks

With the new records of *Cassida inopinata* and *Cryptocephalus (Cryptocephalus) bimaculatus* and the confirmed presence of *Cassida deflorata* and *Cassida nobilis* a total of 61 species of Cassidinae and Cryptocephalini from Sicily are currently known. The occurrence of other 16 species was taken into account but considered questionable and needs further confirms. The Cassidinae and Cryptocephalini species of Sicily constitute about 7% of the whole Italian Chrysomelidae fauna and 1/3 of the Italian known species of those two groups. Twelve different chorotypes are represented; 37% of the total species show a widespread distribution in the Mediterranean Region (MED s.l.), including mainly the Western-Mediterranean chorotype (WME) (12 species; 21% of the total) and Mediterranean chorotype (see Figs. 1 and 2).

A significant contribution is given by the Palaearctic component (PAL s.l.: 33% of the total). Few are the European (EUR s.l.) chorotypes, with only two chorotypes, with species occurring mainly in the Apennine area of northern Sicily. As for the endemism, Sicilian Cassidinae and Cryptocephalini comprise 5 strictly endemic Sicilian (SICI) taxa (two are subspecies and two species are also present in Malta) and five subendemic species, four Apennine and one Tyrrhenian (sensu Biondi et al. 2013). The two species *Cryptocephalus plantaris* and *Pachybrachis siculus* which shows a limited distribution in Sicily and Malta (Sassi and Zoia 2002; Sassi 2012), can probably origins back to marine regressions of the Pleistocene, when Malta and the Hylean region were in contact (Bonfiglio et al. 2002; Stroschio et al. 2011). Only *Pachybrachis testaceus*, is shared with Sardinia and Corsica. Although the Sicilian Cassidinae and Cryptocephalini are associated with 23 different plant

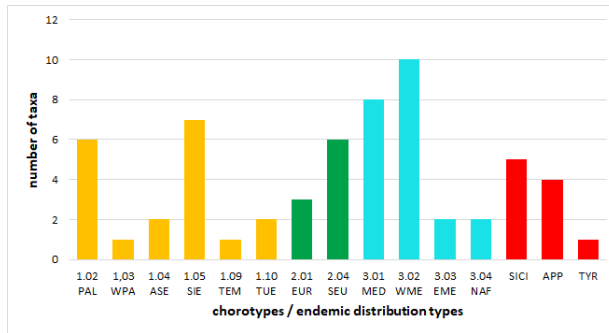


FIGURE 1. Number of Sicilian Cassidinae and Cryptocephalini species per chorotype (see Section 2 for abbreviations)

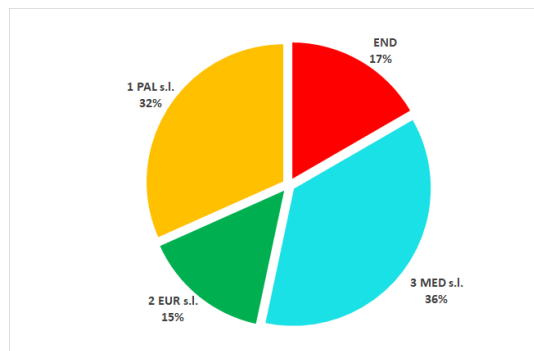


FIGURE 2. Percentage of Sicilian Cassidinae and Cryptocephalini species per chorotype class (see Section 2 for abbreviations)

species, it is interesting to note that 45,9% of these species live on two plant families only Asteraceae (16 spp.) and Fabaceae (12 spp.) (see Fig. 3). The endemic Cassidinae and Cryptocephalini species seem to prefer feeding on Fabaceae, while Asteraceae are mostly preferred by the Palaearctic and Mediterranean ones (see Fig. 4). After analyzing the trophic categories, it emerges that the 43% of the species are monophagous (see Fig. 5), followed by polyphagous (33%) and oligophagous ones. The host plant family for the 8% of the species is still unknown. The monophagous species feed on 10 different plant families, with Fabaceae (35%) resulting the most favourite one (see Fig. 6).

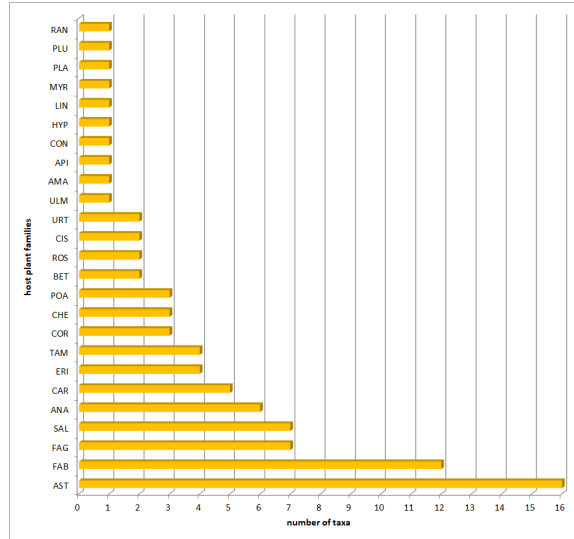


FIGURE 3. Number of Sicilian Cassidinae and Cryptocephalini species per host plants families (see Section 2 for abbreviations)

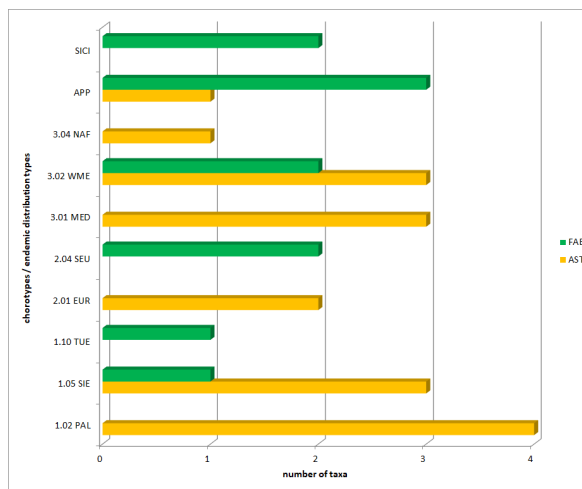


FIGURE 4. Number of Sicilian Cassidinae and Cryptocephalini species per chorotype of the two most significant host plants families (see Section 2 for abbreviations)

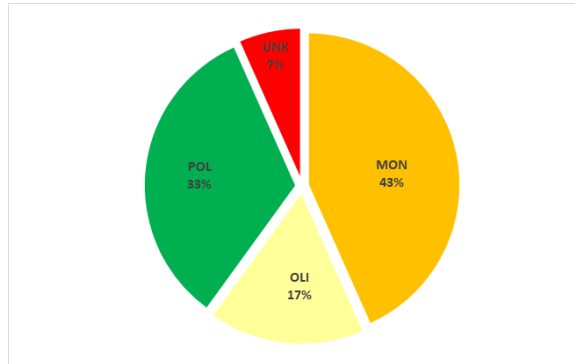


FIGURE 5. Percentage of Sicilian Cassidinae and Cryptocephalini species per trophic category (see Section 2 for abbreviations)

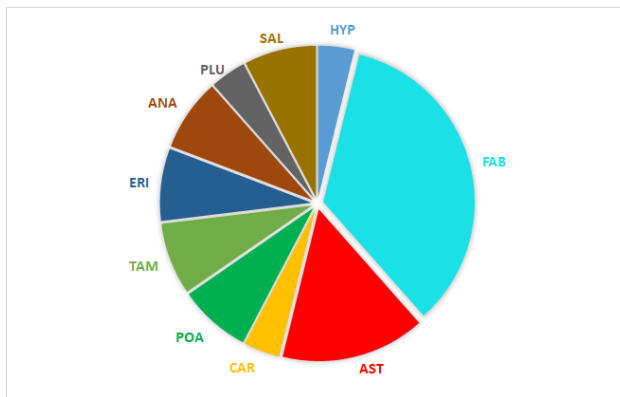


FIGURE 6. Percentage of Sicilian monophagous (MON) Cassidinae and Cryptocephalini species/subspecies per host plants family (see Section 2 for abbreviations)

## Acknowledgments

The authors thank Cesare Bellò for his great help during the field researches.

## References

- Aliquò, V. (1975). “Quarto contributo alla conoscenza della fauna coleotterologica della regione sicula (Clavigeridae, Histeridae, Chrysomelidae)”. *Bollettino dell’Associazione Romana di Entomologia* **30**(1-4), 17–18.
- Aliquò, V. and Romano, F. P. (1976). “A proposito dell’*Anomala osmanlis* Blanch e della *Polyconia spinicornis* Kraatz in Sicilia. Nota di rettifica. (Coleoptera: Scarabeidae, Chrysomelidae)”. *Bollettino Associazione Romana di Entomologia* **31**, 33–34. URL: <http://arderoma.altervista.org/wp-content/uploads/2018/03/1976-unito.pdf>.
- Assenza, V. (1892). “Materiali per una fauna entomologica dei dintorni di Noto”. *Il Naturalista Siciliano* **XI**, 23–45.
- Baviera, C. (2007). “First record of *Gonioctena* (Coleoptera Chrysomelidae, Chrysomelinae) in Sicily, with the description of *Gonioctena theae* n. sp.” *Italian Journal of Zoology* **74**(4), 389–393. DOI: [10.1080/1125000701650719](https://doi.org/10.1080/1125000701650719).
- Baviera, C. (2008). “Prima segnalazione del genere *Aesalus*, Fabricius, 1801 in Sicilia con descrizione di *Aesalus scarabaeoides siculus* n. ssp. (Coleoptera Lucanidae: Aesalinae)”. *Revue Suisse de Zoologie* **115**(3), 585–592. DOI: [10.5962/bhl.part.80447](https://doi.org/10.5962/bhl.part.80447).
- Baviera, C. (2010). “*Alaocyba ientilei* n. sp. (Coleoptera: Curculionioidea, Raymondionymidae) dell’Isola di Marettimo (Isole Egadi, Sicilia)”. *Revue Suisse de Zoologie* **117**(1), 11–16. DOI: [10.5962/bhl.part.117584](https://doi.org/10.5962/bhl.part.117584).
- Baviera, C. (2015). “A review of the genus *Solariola* Flach, 1908 (Coleoptera: Curculionidae: Entiminae, Peritelini)”. *Zootaxa* **3920**(3), 401–430. DOI: [10.11646/zootaxa.3920.3.1](https://doi.org/10.11646/zootaxa.3920.3.1).
- Baviera, C. and Audisio, P. (2014). “The Nitidulidae and Kateretidae (Coleoptera: Cucujoidea) of Sicily: recent records and updated checklist”. *Atti della Accademia Peloritana dei Pericolanti. Classe di Scienze Fisiche, Matematiche e Naturali* **92**(2), A1 [32 pages]. DOI: [10.1478/AAPP.922A1](https://doi.org/10.1478/AAPP.922A1).
- Baviera, C., Bellavista, M., Altadonna, G., Turrisi, G., Bella, S., Muscarella, C., and Sparacio, I. (2017). “The Cerambycidae (Coleoptera: Chrysomeloidea) of Sicily: Recent records and updated checklist”. *Atti della Accademia Peloritana dei Pericolanti. Classe di Scienze Fisiche, Matematiche e Naturali* **95**(1), A2 [79 pages]. DOI: [10.1478/AAPP.951A2](https://doi.org/10.1478/AAPP.951A2).
- Baviera, C. and Bellò, C. (2016). “The Peritelini (Coleoptera: Curculionidae, Entiminae) of the Vitale collection”. *Atti della Accademia Peloritana dei Pericolanti. Classe di Scienze Fisiche, Matematiche e Naturali* **94**(1), A1 [10 pages]. DOI: [10.1478/AAPP.941A1](https://doi.org/10.1478/AAPP.941A1).
- Baviera, C. and Biondi, M. (2015). “The Alticini (Coleoptera: Chrysomelidae, Galerucinae) of Sicily: recent records and updated checklist”. *Atti della Accademia Peloritana dei Pericolanti. Classe di Scienze Fisiche, Matematiche e Naturali* **93**(2), A2 [50 pages]. DOI: [10.1478/AAPP.932A2](https://doi.org/10.1478/AAPP.932A2).
- Baviera, C. and Caldara, R. (2020). “The Curculioninae (Coleoptera: Curculionidae) of Sicily: recent records and updated catalogue.” *Atti della Accademia Peloritana dei Pericolanti. Classe di Scienze Fisiche, Matematiche e Naturali* **98**(1), A1 [79 pages]. DOI: [10.1478/AAPP.981A1](https://doi.org/10.1478/AAPP.981A1).
- Baviera, C. and Liberti, G. (2010). “Dasytidae of the Egadi Archipelago (Coleoptera, Cleroidea) with description of *Danacea hierena* n. sp.” *Zootaxa* **2351**(1), 49–57. DOI: [10.11646/zootaxa.2351.1.5](https://doi.org/10.11646/zootaxa.2351.1.5).
- Baviera, C. and Magnano, L. (2010). “Contribution to the knowledge of the weevil subgenus *Aramichmus* Gozis, genus *Otiorynchus* Germar (Coleoptera, Curculionidae) from Sicily and the Sicilian islands.” *Zootaxa* **2432**(1), 45–58. DOI: [10.11646/zootaxa.2432.1.2](https://doi.org/10.11646/zootaxa.2432.1.2).

- Baviera, C. and Platia, G. (2018). “The Elateridae (Coleoptera: Elateroidea) excl. Cebrionini and Drilini of Sicily: recent records and updated checklist”. *Atti della Accademia Peloritana dei Pericolanti. Classe di Scienze Fisiche, Matematiche e Naturali* **96**(2), A1 [33 pages]. DOI: [10.1478/AAPP.962A1](https://doi.org/10.1478/AAPP.962A1).
- Baviera, C. and Vienna, P. (2019). “The Histeridae (Coleoptera: Histeroidea) of Sicily: new records and updated checklist”. *Atti della Accademia Peloritana dei Pericolanti. Classe di Scienze Fisiche, Matematiche e Naturali* **97**(2), A7 [34 pages]. DOI: [10.1478/AAPP.972A7](https://doi.org/10.1478/AAPP.972A7).
- Bellò, C. and Baviera, C. (2011). “On the Sicilian species of *Pseudomeira* Stierlin (Coleoptera: Curculionidae: Entiminae)”. *Zootaxa* **3100**(1), 35–68. DOI: [10.11646/zootaxa.3100.1.2](https://doi.org/10.11646/zootaxa.3100.1.2).
- Bellò, C., Osella, G., and Baviera, C. (2017). “A taxonomic monograph of the genus *Dodomeira* Bellò & Baviera, a new genus of Peritelini from Sicily (Coleoptera: Curculionidae: Entiminae)”. *Zootaxa* **4334**(1), 1–138. DOI: [10.11646/zootaxa.4334.1.1](https://doi.org/10.11646/zootaxa.4334.1.1).
- Bellò, C., Osella, G., and Baviera, C. (2019). “A taxonomic monograph of the genus *Solariola* Flach, 1908 (Coleoptera: Curculionidae: Entiminae)”. *Zootaxa* **4676**(1), 1–261. DOI: [10.11646/zootaxa.4676.1.1](https://doi.org/10.11646/zootaxa.4676.1.1).
- Bertolini, S. (1872). *Catalogo sinonimico e topografico dei coleotteri d'Italia*. Firenze: Tipografia Cenniniana. 263 pages. DOI: [10.5962/bhl.title.8783](https://doi.org/10.5962/bhl.title.8783).
- Bertolini, S. (1899). *Catalogo sinonimico e topografico dei coleotteri d'Italia*. Siena: tip e lit. sordomutidi L. Lazzeri.
- Bertolini, S. (1904). “Catalogo dei Coleotteri d'Italia”. *Rivista Italiana di Scienze Naturali*, 47–49.
- Biondi, M. (1996). “Proposal for an ecological and zoogeographical categorization of the Mediterranean species of the flea beetle genus *Longitarsus* Berthold”. In: *Chrysomelidae Biology*. Ed. by P. Jolivet and M. Cox. Vol. 3. General Studies. Amsterdam, The Netherlands: SPB Academic Publishing, pp. 13–35.
- Biondi, M., Daccordi, M., Regalin, R., and Zampetti, M. F. (1995). “Coleoptera Polyphaga XV (Chysomelidae, Bruchidae)”. In: *Checklist delle Specie della Fauna Italiana*. Ed. by A. Minelli, S. Ruffo, and S. La Posta. Vol. 60. Bologna: Calderini. URL: <http://www.comitato.faunaitalia.it/docs/F60.docx>.
- Biondi, M., Urbani, F., and D'Alessandro, P. (2013). “Endemism patterns in the Italian leaf beetle fauna (Coleoptera, Chrysomelidae)”. *ZooKeys* **332**, 177–205. DOI: [10.3897/zookeys.332.5339](https://doi.org/10.3897/zookeys.332.5339).
- Bonfiglio, L., Mangano, G., Marra, A. C., Masini, F., Pavia, M., and Petruso, D. (2002). “Pleistocene Calabrian and Sicilian bioprovinces.” *Geobios (Special Memories)* **24**, 29–39. DOI: [10.1016/S0016-6995\(02\)00046-3](https://doi.org/10.1016/S0016-6995(02)00046-3).
- Borowiec, L. (1995). “Tribal classification of the cassidoid Hispinae (Coleoptera: Chrysomelidae)”. In: *Biology, phylogeny and classification of Coleoptera: papers celebrating the 80th birthday of Roy A Crowson*. Ed. by S. Pakaluk J. and Ślipiński. Warszawa: Muzeum i Instytut Zoologii PAN, pp. 541–558.
- Borowiec, L. and Świętojańska, J. (2014). “Cassidinae Gyllenhal, 1813”. In: *Handbook of Zoology, Arthropoda, Insecta, Coleoptera, Beetles, Vol. 3*. Ed. by R. Leschen and R. Beutel. Berlin, New York.: Walter de Gruyter, pp. 198–217.
- Borowiec, L. and Świętojańska, J. (2017). *Cassidinae of the world. An interactive manual (Coleoptera: Chrysomelidae)*. URL: <http://www.cassidae.uni.wroc.pl/katalog%20internetowy/index.htm> (visited on 08/28/2020).
- Burlini, M. (1956). “Revisione dei *Cryptocephalus* italiani e della maggior parte delle specie di Europa (Col. Chrysomelidae)”. *Memorie della Società Entomologica Italiana* (34), 1–287.
- Burlini, M. (1968). “Revisione delle specie italiane e della maggior parte delle specie europee del genere *Pachybrachis* Chev.” *Memorie della Società Entomologica Italiana* (47), 11–116.

- Caldara, R., Casalini, R., and Baviera, C. (2012). "Taxonomic and nomenclatural notes on the *Rhinusa tetra* (Fabricius) species complex (Coleoptera: Curculionidae)". *Zootaxa* **3329**(1), 31–40. DOI: [10.11646/zootaxa.3329.1.3](https://doi.org/10.11646/zootaxa.3329.1.3).
- Caldara, R., Pesarini, C., Colonnelli, E., and Baviera, C. (2010). "V Contributo alla revisione della collezione coleotterologica Francesco Vitale: Coleoptera Curculionoidea (Prima parte)". *Memorie della Società Entomologica Italiana* **89**, 229–257. DOI: [10.4081/memorieSEI.2010.229](https://doi.org/10.4081/memorieSEI.2010.229).
- Chaboo, C. S. (2007). "Biology and phylogeny of the Cassidinae Gyllenhal sensu lato (tortoise and leaf-mining beetles) (Coleoptera: Chrysomelidae)". *Bulletin of the American Museum of Natural History* **305**, 1–250. URL: <http://digitallibrary.amnh.org/handle/2246/5870>.
- Daccordi, M. and Ruffo, S. (1975). "Coleotteri Crisomelidi delle isole Egadi e descrizione di una nuova specie del genere *Pachybrachis* Chev." *Bollettino del Museo Civico di Storia Naturale di Verona* **1**, 427–437.
- Fiori, A. (1906). "Una breve escursione in Sicilia." *Beiträge zur Entomologie* **18**, 200–211.
- Gómez-Zurita, J., Hunt, T., and Vogler, A. (2008). "Multilocus ribosomal RNA phylogeny of the leaf beetles (Chrysomelidae)." *Cladistics* **24**, 34–50. DOI: [10.1111/j.1096-0031.2007.00167.x](https://doi.org/10.1111/j.1096-0031.2007.00167.x).
- Hsiao, T. and Windsor, D. (1999). "Historical and biological relationships from Hispinae inferred from 12S mtDNA sequence data." In: *Advances in Chrysomelidae Biology*. Ed. by M. Cox. Leiden, the Netherlands: Backhuys Publishers, pp. 39–50.
- Leonardi, C. and Sassi, D. (2001). "Studio critico sulle specie di *Cryptocephalus* del gruppo *hypochaeridis* (Linné, 1758) e sulle forme ad esse attribuite (Coleoptera Chrysomelidae)". *Atti della Società italiana di Scienze naturali e del Museo civico di Storia naturale di Milano* **142**(1), 3–96.
- Liebmann, W. (1962). "Ein Beitrag zur Käferfauna von Pantelleria". *Stuttgarter Beiträge Naturkunde Serie A [Biologie]* **87**, 1–6.
- Lo Cascio, P., Cecchi, B., Abbazzi, P., and Arnone, M. (2006). "A contribution to the knowledge of the Coleoptera of the Aeolian Islands (Insecta Coleoptera)". *Il Naturalista Siciliano*. 4th ser. **30**(2), 315–341. URL: [http://www.sssn.it/PDF/PDF%20Nat.%20Sic.%202%202006/Lo%20Cascioetalii\\_315-341.pdf](http://www.sssn.it/PDF/PDF%20Nat.%20Sic.%202%202006/Lo%20Cascioetalii_315-341.pdf).
- Lo Valvo, F. and Massa, B. (1995). "Indice e check-list degli Artropodi terrestri di Lampedusa. Lampione e Pantelleria, con riferimenti bibliografici". *Il Naturalista Siciliano* **19** (Supplement), 871–896.
- Löbl, I. and Smetana, A., eds. (2010). *Chrysomeloidea*. Vol. 6. Catalogue of Palaearctic Coleoptera. Leiden: Brill. DOI: [10.1163/9789004260917](https://doi.org/10.1163/9789004260917).
- Luigioni, P. (1929). "I coleotteri d'Italia. Catalogo sinonimico topografico bibliografico". *Memorie Accademia Pontificia Nuovi Lincei* **13**, 1–1160.
- Luigioni, P. and Tirelli, A. (1912). "Una settimana in Sicilia. Escursione entomologica nei dintorni di Palermo e nei Boschi di Ficuzza". *Bollettino della Società Entomologica Italiana* **44**, 148–167. URL: <https://www.biodiversitylibrary.org/item/41140#page/150/mode/1up>.
- Magrini, P. and Baviera, C. (2011). "Note sulle *Typhloreicheia* (Holdhaus, 1924) siciliane del gruppo *praecox* con descrizione di una nuova specie (Coleoptera Carabidae: Scaritinae)". *Revue Suisse de Zoologie* **118**(2), 329–343. DOI: [10.5962/bhl.part.117813](https://doi.org/10.5962/bhl.part.117813).
- Marseul, M. (1875). "Monographie des Cryptocéphales du nord de l'ancien-monde". *L' Abeille* **13**, 1–326.
- Montagna, M., Sassi, D., and Giorgi, A. (2013). "*Pachybrachis holerorum* (Coleoptera: Chrysomelidae: Cryptocephalinae), a new species from the Apennines, Italy, identified by integration of morphological and molecular data". *Zootaxa* **3741**(2), 89–92. DOI: [10.11646/zootaxa.3741.2.3](https://doi.org/10.11646/zootaxa.3741.2.3).
- Petitpierre, E. (2000). "Coleoptera. Chrysomelidae I". In: *Fauna Iberica*. Ed. by A. Ramos Sánchez. Vol. 13. Madrid: Museo Nacional de Ciencias Naturales. Consejo Superior de Investigaciones Científicas.

- Pic, M. (1903). "Note Entomologiche". *Rivista Coleopterologica Italiana* **1**(6), 128–131. URL: <https://www.biodiversitylibrary.org/item/105199#page/160/mode/1up>.
- Ragusa, E. (1882). "Coleotteri nuovi o poco conosciuti di Sicilia." *Il Naturalista Siciliano* **1**, 250–251.
- Ragusa, E. (1892). "Breve gita entomologica all'isola di Lampedusa". *Il Naturalista Siciliano* **11**, 234–238. URL: <https://www.biodiversitylibrary.org/item/41683#page/246/mode/1up>.
- Ragusa, E. (1894). "Coleotteri di Sicilia esistenti nel Museo Zoologico della R. Università di Napoli". *Il Naturalista Siciliano* **13**, 70–73. URL: <https://www.biodiversitylibrary.org/item/97052#page/86/mode/1up>.
- Ragusa, E. (1922). "Coleotteri nuovi o poco conosciuti nella Sicilia". *Atti della Reale Accademia di Scienze, Lettere e Belle Arti di Palermo* **12**, 1–18. URL: <https://www.biodiversitylibrary.org/item/103428#page/381/mode/1up>.
- Raimondo, F. M., Domina, G., and Spadaro, V. (2010). "Checklist of the vascular flora of Sicily". *Quaderni di Botanica Ambientale e Applicata* **21**, 189–252. URL: <http://www.quadernibotanicambientaleappl.it/quaderni/21-189.pdf>.
- Ratti, E. (1987). "Ricerche faunistiche del Museo civico di Storia Naturale di Venezia nell'Isola di Pantelleria. VI – Coleoptera: Cerambycidae e Chrysomelidae". *Bollettino del Museo civico di Storia Naturale di Venezia* **37**, 47–55.
- Romano, B. (1849). *Coleotteri della Sicilia raccolti e posseduti da Baldassare Romano*. Palermo: Tipografia di Francesco Lao. 28 pages.
- Rottenberg, A. (1871). "Beiträge zur Coleopteren-Fauna von Sicilien". *Berliner entomologische Zeitschrift* **15**, 225–247. URL: <https://www.biodiversitylibrary.org/page/9209391#page/249/mode/1up>.
- Roubal, J. (1912). "Nuova specie di *Cryptocephalus* della Sicilia". *Rivista Coleopterologica Italiana* **10**(1), 1–2. URL: <https://www.biodiversitylibrary.org/item/45606#page/19/mode/1up>.
- Sassi, D. (1994). "Le Cassidine appenniniche del Museo di Storia Naturale di Verona (Coleoptera Chrysomelidae)." *Bollettino del Museo Civico di Storia Naturale di Verona* **18** (1991), 53–90.
- Sassi, D. (2005). "Insecta Coleoptera Chrysomelidae Cryptocephalinae." In: *Checklist e distribuzione della fauna italiana*. Ed. by S. Ruffo and F. Stoch. Vol. 16. Verona: Memorie del Museo Civico di Storia Naturale di Verona, 2. serie, Sezione Scienze della Vita, 223–225 + CD-ROM.
- Sassi, D. (2012). "The Cryptocephalini of the Maltese Islands (Coleoptera, Chrysomelidae)." *Bulletin of Entomological Society of Malta* **5**, 87–92. URL: <https://www.um.edu.mt/library/oar/handle/123456789/535>.
- Sassi, D. (2013). *Fauna Europaea: Chrysomelidae Cryptocephalinae*. In: *Fauna Europaea: Coleoptera, Beetles*. Audisio P. A. & E. J. van de Jong, Y. S. D. M. (eds.). *Fauna Europaea version 2.6*. URL: <http://www.faunaeur.org> (visited on 08/28/2020).
- Sassi, D. and Borowiec, L. (2006). "*Cassida inopinata*, a new species from Italy and Balkan Region (Coleoptera: Chrysomelidae: Cassidinae)." *Genus* **17** (4), 545–560.
- Sassi, D. and Zoia, S. (2002). "*Cryptocephalus* (*Burlinius*) *plantaris* from Sicily and Malta, species resurrected synonymy with *C. (B.) luridicollis* (Coleoptera Chrysomelidae)." *Bollettino della Società Entomologica Italiana*. **17** (4), 111–116.
- Schöller, M. (2002). "Taxonomy of *Cryptocephalus* Geoffroy: what do we know? (Coleoptera: Chrysomelidae: Cryptocephalinae)." *Mitteilungen des Internationalen Entomologischen Vereins e. V. (Frankfurt am Main)* **27**(1), 59–76.
- Schöller, M. (2020). "New country records and a new synonym in the subgenus *Burlinius* of *Cryptocephalus* (Coleoptera: Chrysomelidae)." *Mitteilungen des Internationalen Entomologischen Vereins e. V. (Frankfurt am Main)* **43**, 189–192.
- Ślipiński, S. A., Leschen, R. A., and Lawrence, J. F. (2011). "Order Coleoptera Linnaeus, 1758". *Zootaxa* (3148) (Animal biodiversity: An outline of higher-level classification and survey of

- taxonomic richness). Ed. by Z. Q. Zhang, 203–208. URL: <https://mapress.com/zootaxa/2011/f/z03148p208.pdf>.
- Solano, E., Thomaes, A., Cox, K., Carpaneto, G. M., Cortellessa, S., Baviera, C., Bartolozzi, L., Zilioli, M., Casiraghi, M., Audisio, P., and Antonini, G. (2016). “When morphological identification meets genetic data: the case of *Lucanus cervus* and *L. tetraodon* (Coleoptera, Lucanidae)”. *Journal of Zoological Systematics and Evolutionary Research* **54**(3), 197–205. URL: <https://onlinelibrary.wiley.com/doi/10.1111/jzs.12124>.
- Stroschio, S., Baviera, C., Frati, F., Lo Paro, G., and Nardi, F. (2011). “Deep genetic divergence in the darkling beetle *Pimelia rugulosa* Germar, 1824 (Coleoptera, Tenebrionidae) reflects Plio-Pleistocenic paleogeographic history of Sicily”. *Journal of Zoological Systematics and Evolutionary Research* **49**(3), 196–203. DOI: [10.1111/j.1439-0469.2011.00617.x](https://doi.org/10.1111/j.1439-0469.2011.00617.x).
- Suffrian, E. (1848). “Revision der europäischen Arten der Gattung *Cryptocephalus*.” *Linnaea Entomologica* **3**, 1–152.
- Toševski, I., Caldara, R., Jović, J., Baviera, C., Hernández-Vera, G., Gassmann, A., and Emerson, B. C. (2014). “Revision of *Mecinus heydenii* species complex (Curculionidae): integrative taxonomy reveals multiple species exhibiting host specialization”. *Zoologica Scripta* **43**(1), 34–51. DOI: [10.1111/zsc.12037](https://doi.org/10.1111/zsc.12037).
- Toševski, I., Caldara, R., Jović, J., Hernández-Vera, G., Baviera, C., Gassmann, A., and Emerson, B. C. (2015). “Host associated genetic divergence and taxonomy in the *Rhinusa pilosa* Gyllenhal species complex: an integrative approach”. *Systematic Entomology* **40**(1), 268–287. DOI: [10.1111/syen.12109](https://doi.org/10.1111/syen.12109).
- Toševski, I., Caldara, R., Jović, J., Hernández-Vera, G., Baviera, C., Gassmann, A., and Emerson, B. C. (2011). “Morphological, molecular and biological evidence reveal two cryptic species in *Mecinus janthinus* Germar (Coleoptera, Curculionidae), a successful biological control agent of Dalmatian toadflax, *Linaria dalmatica* (Lamiales, Plantaginaceae)”. *Systematic Entomology* **36**(4), 741–753. DOI: [10.1111/j.1365-3113.2011.00593.x](https://doi.org/10.1111/j.1365-3113.2011.00593.x).
- Vigna Taglianti, A., Audisio, P., Belfiore, C., Biondi, M., Bologna, M. A., Carpaneto, G. M., De Biase, A., De Felice, S., Piattella, E., Racheli, T., Zapparoli, M., and Zoia, S. (1992). “Riflessioni di gruppo sui corotipi fondamentali della fauna W-paleartica ed in particolare italiana”. *Biogeographia - The Journal of Integrative Biogeography* **16**, 159–179. DOI: [10.21426/B616110375](https://doi.org/10.21426/B616110375).
- Vigna Taglianti, A., Audisio, P., Biondi, M., Bologna, M. A., Carpaneto, G. M., De Biase, A., Fattorini, S., Piattella, E., Sindaco, R., Venchi, A., and Zapparoli, M. (1999). “A proposal for a chorotype classification of the Near East Fauna, in the framework of the Western Palearctic region”. *Biogeographia - The Journal of Integrative Biogeography* **20**, 31–59. DOI: [10.21426/B6110172](https://doi.org/10.21426/B6110172).
- Vitale, F. (1920). “Coleotteri nuovi per la Sicilia”. *Atti della Reale Accademia Peloritana*, 1–13.
- Vitale, F. (1928). “Coleotteri nuovi o poco conosciuti di Sicilia.” *Memorie della Società Entomologica Italiana* **6**, 44–54.
- Vitale, F. (1932). “Coleotteri nuovi o poco noti di Sicilia”. *Bollettino Società Entomologica Italiana*, 35–40.
- Vitale, F. (1935). “Contributo all’Entomologia Siciliana. I Chrysomelidae siciliani. Catalogo sinonimico, Parte II.” *Atti della Reale Accademia Peloritana* **37**, 73–94.
- Vitale, F. (1940). “Nuovi acquisti per la fauna entomologica sicula”. *Atti della Reale Accademia Peloritana. Classe di Scienze Fisiche, Matematiche e Biologiche* **42**, 170–183. URL: <http://cab.unime.it/mus/2131/>.
- Warchałowski, A. (2007). “A preliminary study and review of the genus *Stylosomus* Suffrian, 1848 (Coleoptera: Chrysomelidae: Cryptocephalinae)”. *Genus* **18.3**, 413–432.
- Winkler, A. (1930). *Catalogus coleopterorum regionis palaearticae*. Wien: A. Winkler Verlag. 1698 pages.

- 
- <sup>a</sup> Università degli Studi di Messina  
Dipartimento di Scienze Chimiche, Biologiche, Farmaceutiche e Ambientali  
Contrada Papardo, 98166 Messina, Italy
- <sup>b</sup> Università degli Studi di Milano  
Centro Interdipartimentale di Studi Applicati per la Gestione Sostenibile e la Difesa della Montagna  
Via Celoria 2, 20133 Milano, Italy
- \* To whom correspondence should be addressed | email: [cosimo.baviera@unime.it](mailto:cosimo.baviera@unime.it)

Communicated 6 December 2018; manuscript received 27 May 2020; published online 14 December 2020



© 2020 by the author(s); licensee *Accademia Peloritana dei Pericolanti* (Messina, Italy). This article is an open access article distributed under the terms and conditions of the [Creative Commons Attribution 4.0 International License](https://creativecommons.org/licenses/by/4.0/) (<https://creativecommons.org/licenses/by/4.0/>).